

Clinton County, Iowa
Iowa South Zone (1402)
Horiz. Datum: **NAD83(NA2011)**
Vert. Datum: NAVD 1988
US Survey Feet
2013

Point Name: **5055**

Designation: 2007-055 Cedar Co GPS Control Pt (Set by DCI in 2007)

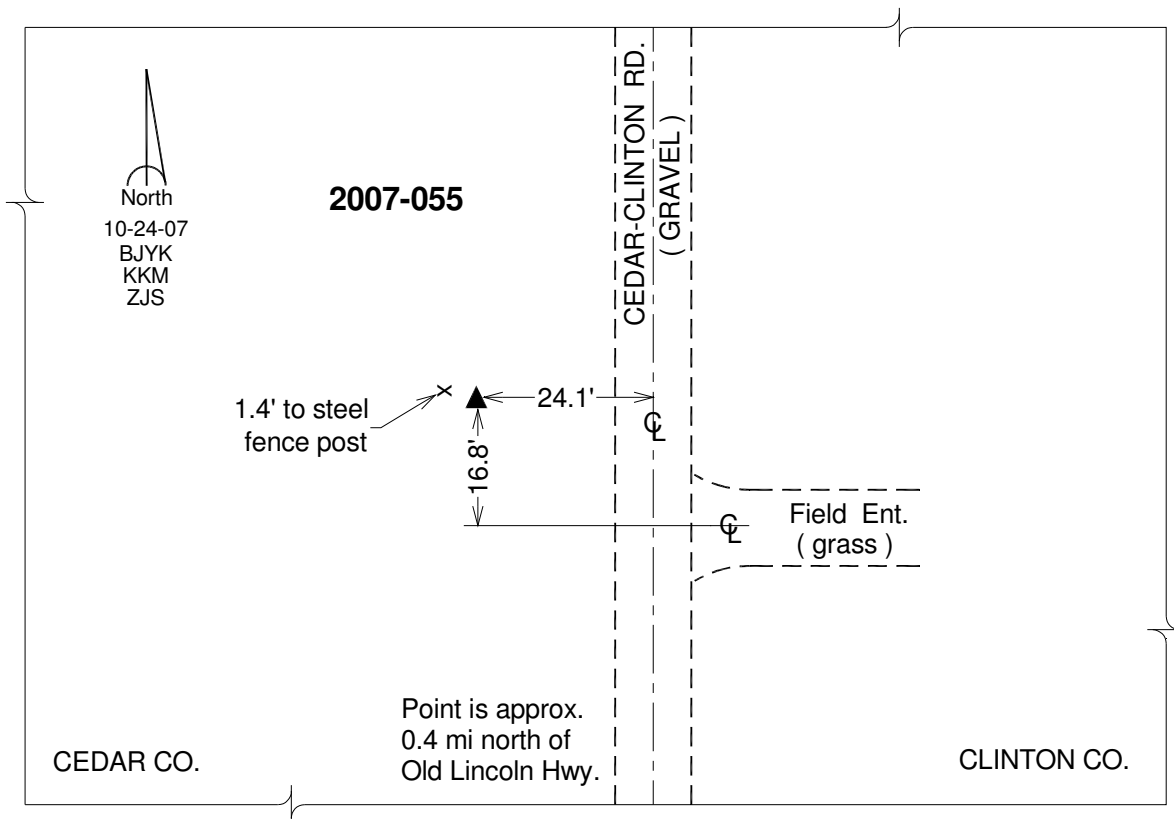
Northing: **687380.50sft** Easting: **2349069.16sft**

Orthometric Height: **727.96sft** Ellipsoid Height: **620.85sft** **Geoid12A**

Latitude: **N41°51'27.09148"** Longitude: **W90°53'54.14423"**

Mapping Angle: **1°42'49"** Combination Scale Factor: **0.999984392**

Monument Type: Berntsen 3/4" Top Security Rod Monument with a 2-1/2" dia. domed survey cap and permanent magnet encased in a white PVC pipe with a NGS style alum. access cover.



This document was prepared by DCI on 05-29-2013 for use by Clinton County, Iowa.