

**Clinton County, Iowa**  
 Iowa South Zone (1402)  
 Horiz. Datum: **NAD83(NA2011)**  
 Vert. Datum: NAVD 1988  
 US Survey Feet  
**2013**

Point Name: **5056**

**Designation:** 2007-056 Cedar Co GPS Control Pt (Set by DCI in 2007)

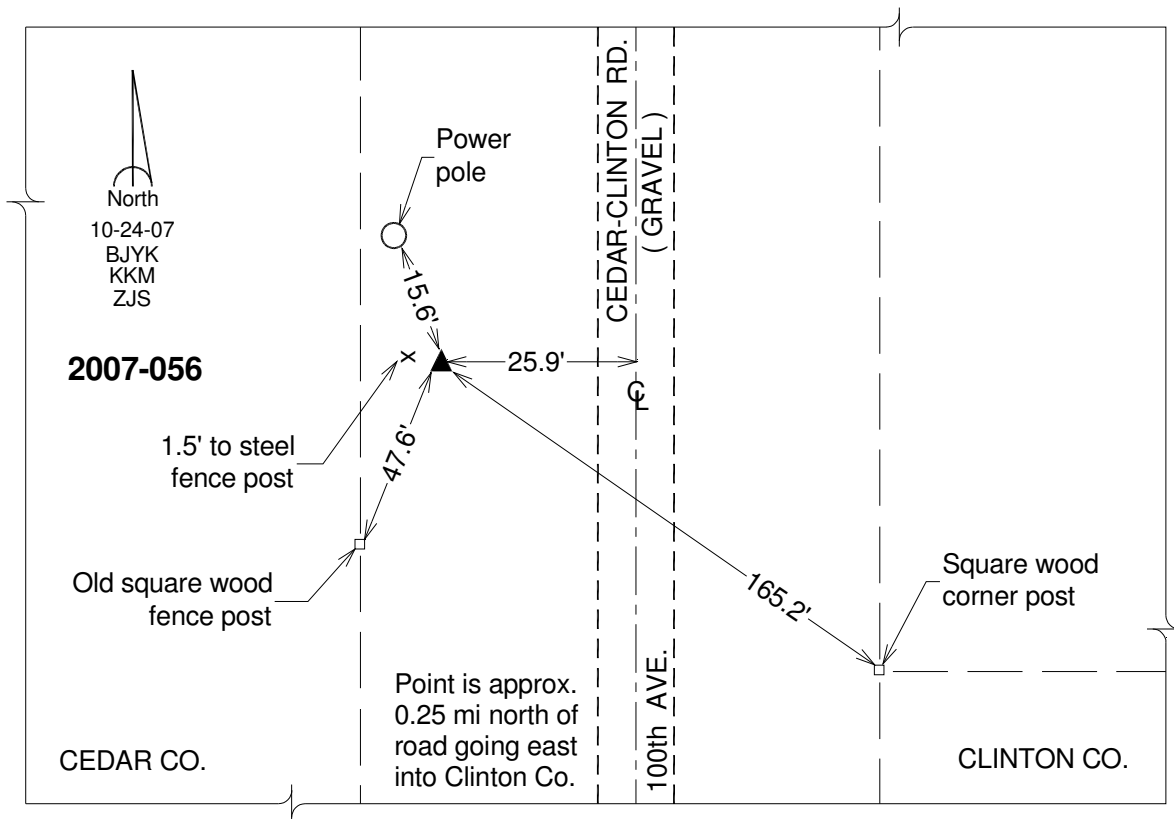
Northing: **702598.86sft**    Easting: **2348569.88sft**

Orthometric Height: **713.69sft**    Ellipsoid Height: **606.62sft**    **Geoid12A**

Latitude: **N41°53'57.51288"**    Longitude: **W90°53'54.72542"**

Mapping Angle: **1°42'49"**    Combination Scale Factor: **0.999993708**

**Monument Type:** Berntsen 3/4" Top Security Rod Monument with a 2-1/2" dia. domed survey cap and permanent magnet encased in a white PVC pipe with a NGS style alum. access cover.



*This document was prepared by DCI on 05-29-2013 for use by Clinton County, Iowa.*