

Clinton County, Iowa
Iowa South Zone (1402)
Horiz. Datum: **NAD83(NA2011)**
Vert. Datum: NAVD 1988
US Survey Feet
2013

Point Name: **5069**

Designation: JONES CO. GPS CONTROL PT. 2004-069 (Set by DCI in 2004)

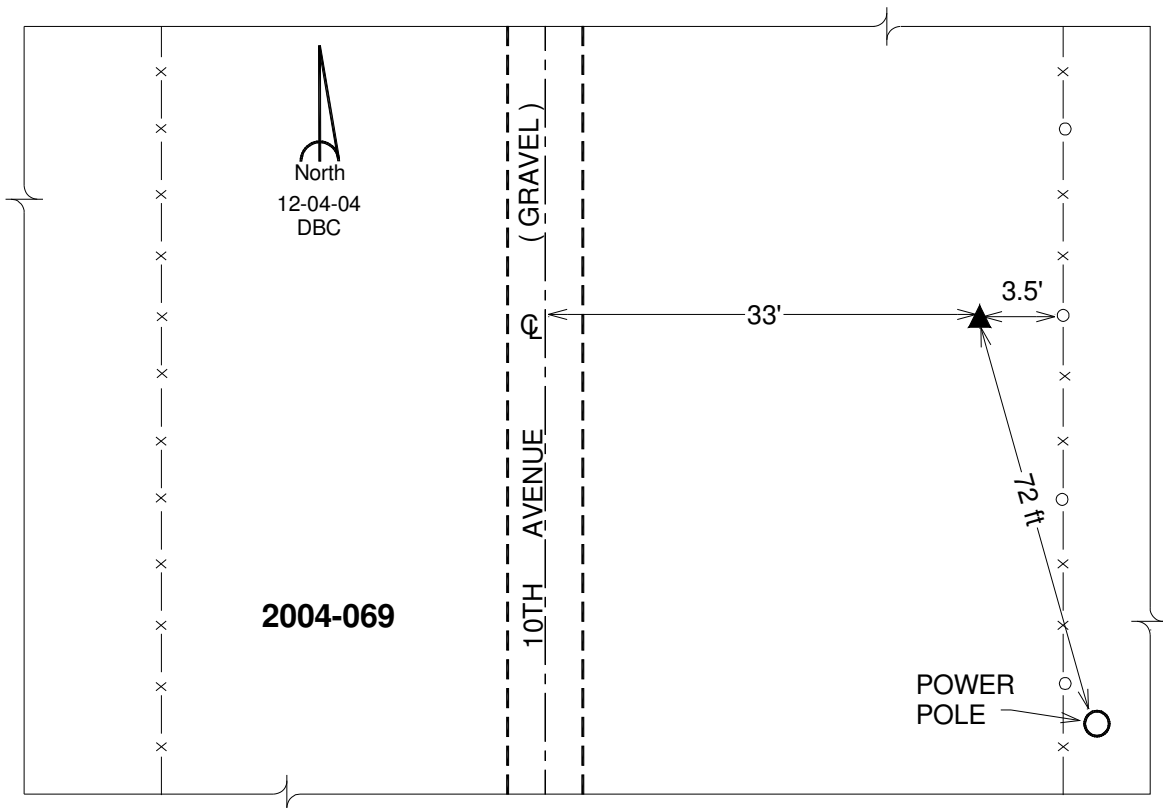
Northing: **737281.86**sft Easting: **2347584.57**sft

Orthometric Height: **879.73**sft Ellipsoid Height: **772.82**sft **Geoid12A**

Latitude: **N41°59'40.27245"** Longitude: **W90°53'54.03323"**

Mapping Angle: **1°42'49"** Combination Scale Factor: **1.000007461**

Monument Type: Berntsen Top Security Rod Monument with a 2-1/2" dia. domed cap and a permanent magnet encased in a 5" dia. PVC pipe with a NGS style aluminum access cover.



This document was prepared by DCI on 05-29-2013 for use by Clinton County, Iowa.