

Clinton County, Iowa
 Iowa South Zone (1402)
 Horiz. Datum: **NAD83(NA2011)**
 Vert. Datum: NAVD 1988
 US Survey Feet
2013

Point Name: **5070**

Designation: JONES CO. GPS CONTROL PT. 2004-070 (Set DCI in 2004)

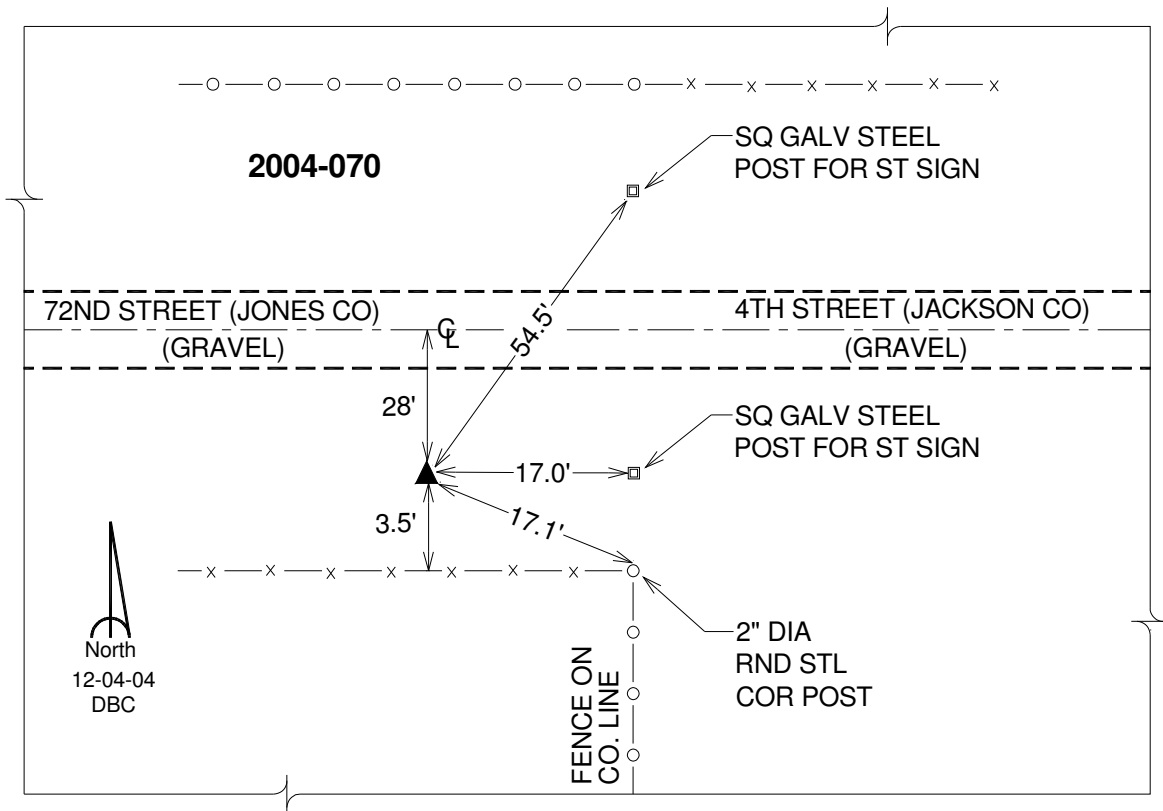
Northing: **752789.38sft** Easting: **2347097.35sft**

Orthometric Height: **819.78sft** Ellipsoid Height: **712.93sft** **Geoid12A**

Latitude: **N42°02'13.53718"** Longitude: **W90°53'54.34120"**

Mapping Angle: **1°42'49"** Combination Scale Factor: **1.000020915**

Monument Type: Berntsen Top Security Rod Monument with a 2-1/2" dia. domed cap and a permanent magnet encased in a 5" dia. PVC pipe with a NGS style aluminum access cover.



This document was prepared by DCI on 05-29-2013 for use by Clinton County, Iowa.