

**Clinton County, Iowa**  
Iowa South Zone (1402)  
Horiz. Datum: **NAD83(NA2011)**  
Vert. Datum: NAVD 1988  
US Survey Feet  
**2013**

Point Name: **5080**

**Designation:** CBN horiz. control station and 1st order vert. "C 175" PID: NJ0104

Northing: **788004.05sft** Easting: **2530201.04sft**

Orthometric Height: **627.21sft** Ellipsoid Height: **518.72sft** **Geoid12A**

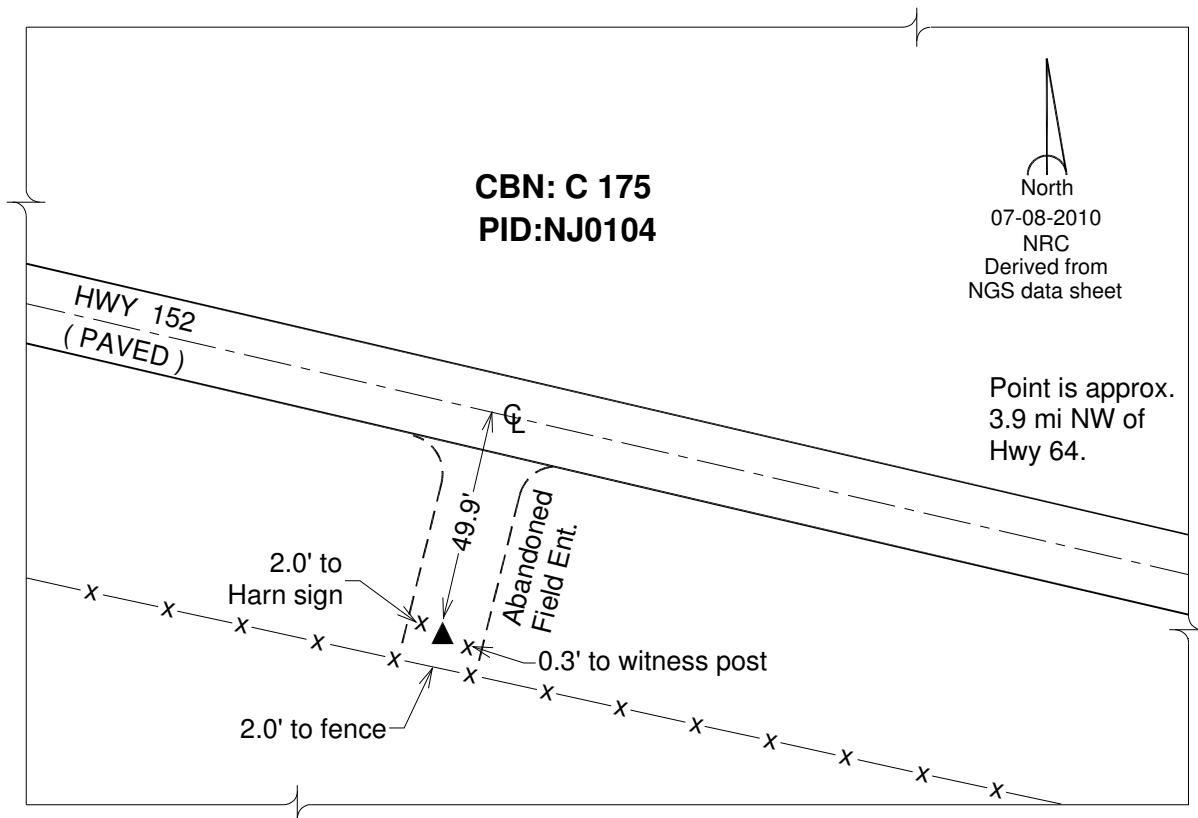
Latitude: **N42°07'00.05690"**

Longitude: **W90°13'12.13315"**

Mapping Angle: **2°09'38"**

Combination Scale Factor: **1.000051488**

**Monument Type:** Bench Mark disk stamped " C 175 1970" set in the top of a metal pipe driven into ground.



*This document was prepared by DCI on 05-29-2013 for use by Clinton County, Iowa.*