

City of Dubuque, Iowa

07/11/2020

Units: US Survey Feet

Point ID: 107

Stamping on Disk: GPS 107

NAD 83(NA2011) Latitude: **N42°26'32.23574"** Longitude: **W90°39'19.87048"**

NAVD 88 Ortho Height: **787.464sft** Ellip. Ht: **680.680sft** Geoid18(Conus)

Horizontal Datum: NAD 83(NA2011) - Vertical Datum: NAVD 1988

Iowa North Zone (1401) Northing: **3637139.068sft** Easting: **5688877.216sft**

Mapping Angle: **1°55'40.2"** Combination Scale Factor: **0.9999205293**

Iowa Regional Coordinate System, Zone 5, Waterloo LCC

IaRCS Zone 5 Northing: **8398852.228sft** Easting: **21467017.481sft**

Mapping Angle: **-0°04'56.8"** Combination Scale Factor: **0.9999957045**

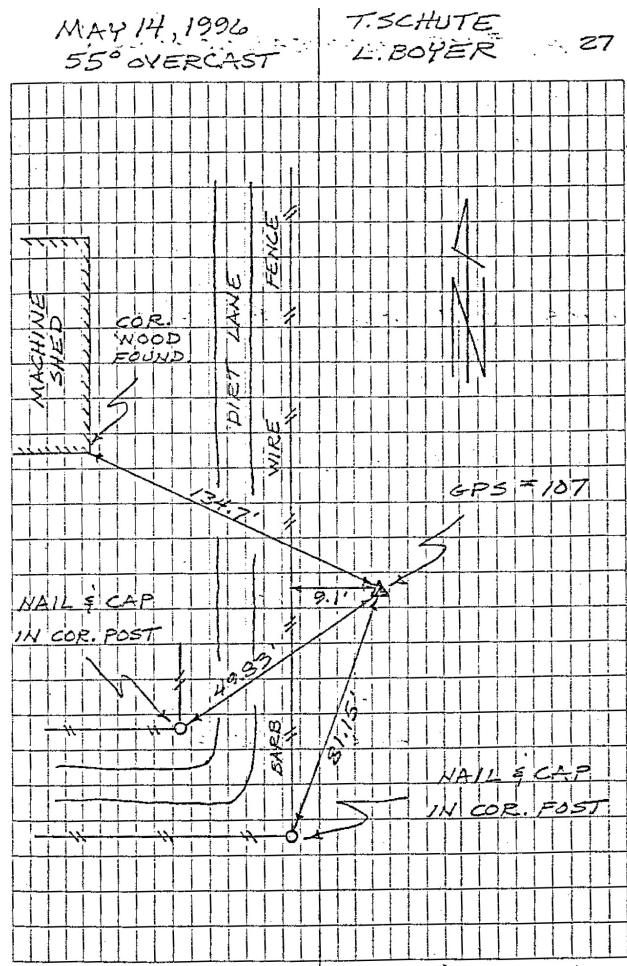
GPS #107 REFERENCE TIES

GPS #107, PLACED 5/8" X 8'0" ALUMINUM ROD WITH ALUMINUM CAP, STAMPED "GPS 107", AND ACCESS COVER, 12" DEEP, MON. 8" BELOW ACCESS COVER.

ELEV. = 787.57
NAVD - 88

N. 3637139.1816
E. 5688877.4932
U.S. SURVEY FEET
NAD - 83 (1991)

SCALE FACTOR 0.999953065
CONVERGENCE 01°55'40.19"



This document was prepared by Dan Corbin, Inc. for The City of Dubuque, Iowa.