

City of Dubuque, Iowa

07/11/2020

Units: US Survey Feet

Point ID: 116

Stamping on Disk: GPS 116

NAD 83(NA2011) Latitude: N42°25'05.00765" Longitude: W90°40'32.48040"

NAVD 88 Ortho Height: 806.062sft Ellip. Ht: 699.452sft Geoid18(Conus)

Horizontal Datum: NAD 83(NA2011) - Vertical Datum: NAVD 1988

Iowa North Zone (1401) Northing: 3628131.511sft Easting: 5683731.157sft

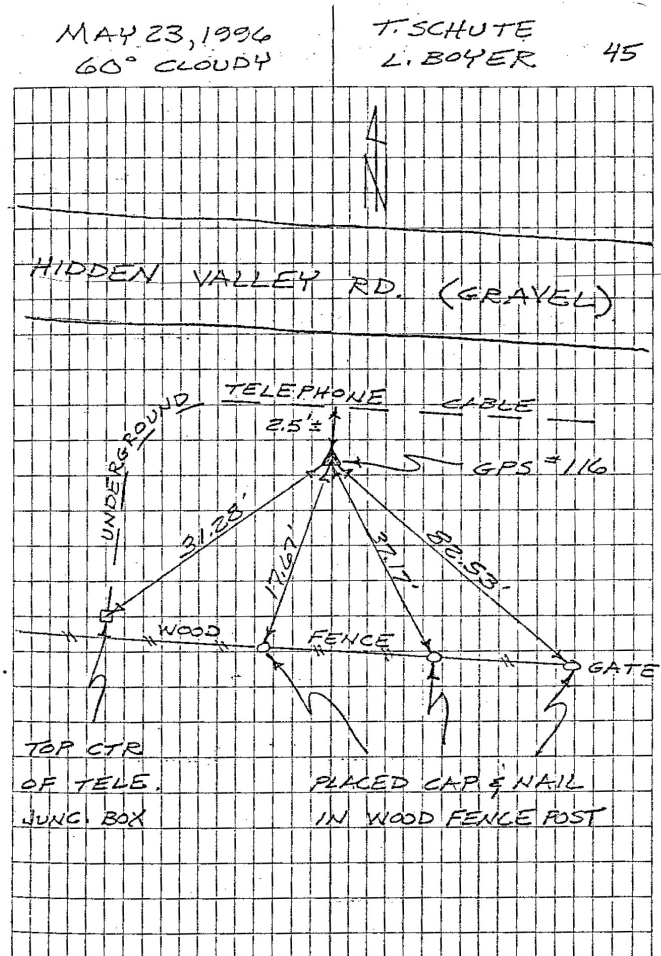
Mapping Angle: 1°54'51.0" Combination Scale Factor: 0.9999213748

Iowa Regional Coordinate System, Zone 5, Waterloo LCC

IaRCS Zone 5 Northing: 8390030.071sft Easting: 21461558.215sft

Mapping Angle: -0°05'45.7" Combination Scale Factor: 0.9999952526

GPS #	REFERENCE TIES
GPS #116	PLACED 5/8" X 8'0" ALUMINUM ROD WITH ALUMINUM CAP, STAMPED "GPS 116", AND ACCESS COVER, 5" DEEP. MON. 7" BELOW ACCESS COVER.
	ELEV. = 806.03 NAVD-88
	N. 3628131.7274 E. 5683731.3246 U.S. SURVEY FEET NAD-83 (1991)
	SCALE FACTOR 0.999954808 CONVERGENCE 01° 54' 50.98"



This document was prepared by Dan Corbin, Inc. for The City of Dubuque, Iowa.