

City of Dubuque, Iowa

07/11/2020

Units: US Survey Feet

Point ID: 132

Stamping on Disk: GPS 132

NAD 83(NA2011) Latitude: N42°32'16.75214" Longitude: W90°41'56.33071"

NAVD 88 Ortho Height: 783.545sft Ellip. Ht: 676.770sft Geoid18(Conus)

Horizontal Datum: NAD 83(NA2011) - Vertical Datum: NAVD 1988

Iowa North Zone (1401) Northing: 3671603.516sft Easting: 5675997.562sft

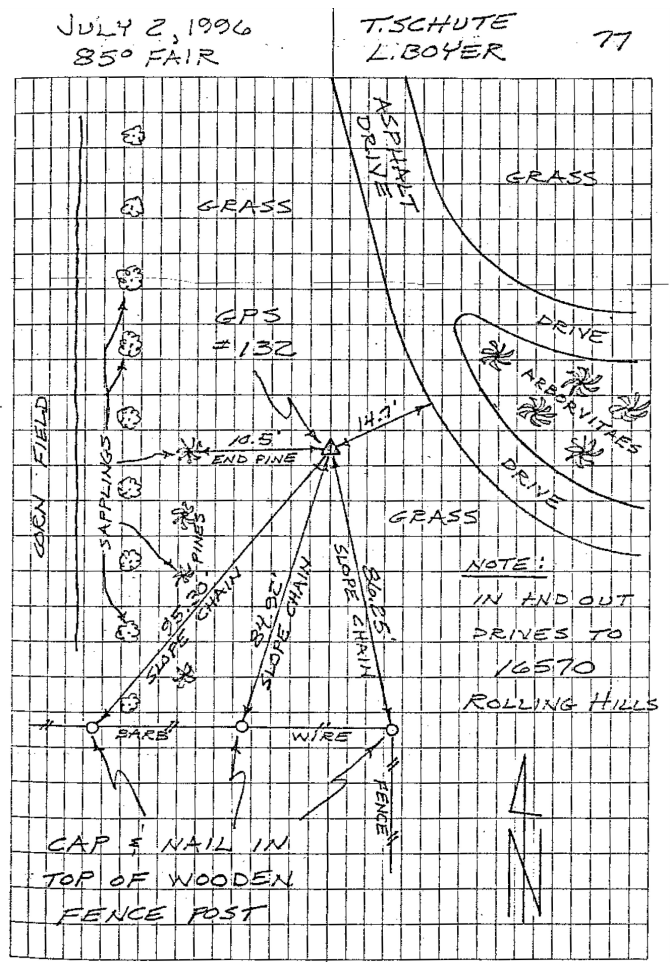
Mapping Angle: 1°53'54.2" Combination Scale Factor: 0.9999155687

Iowa Regional Coordinate System, Zone 5, Waterloo LCC

IaRCS Zone 5 Northing: 8433750.014sft Easting: 21455353.834sft

Mapping Angle: -0°06'43.2" Combination Scale Factor: 0.9999969262

GPS #132	REFERENCE TIES
GPS #132, PLACED 5/8" X 12'0" ALUMINUM ROD WITH ALUMINUM CAP, STAMPED "GPS 132", AND ACCESS COVER, 5" DEEP. MON. 2" BELOW ACCESS COVER.	
ELEV. = 783.35 NAVD-88	
N. 3671603.0500 E. 5675997.9209 U.S. SURVEY FEET NAD-83(1991)	
SCALE FACTOR 0.999947917 CONVERGENCE 01°53'54.15"	



This document was prepared by Dan Corbin, Inc. for The City of Dubuque, Iowa.