

City of Dubuque, Iowa

07/11/2020

Units: US Survey Feet

Point ID: 136

Stamping on Disk: **GPS 136**

NAD 83(NA2011) Latitude: **N42°26'50.72908"** Longitude: **W90°42'50.78958"**

NAVD 88 Ortho Height: **767.517sft** Ellip. Ht: **661.001sft** Geoid18(Conus)

Horizontal Datum: NAD 83(NA2011) - Vertical Datum: NAVD 1988

Iowa North Zone (1401) Northing: **3638483.595sft** Easting: **5673010.265sft**

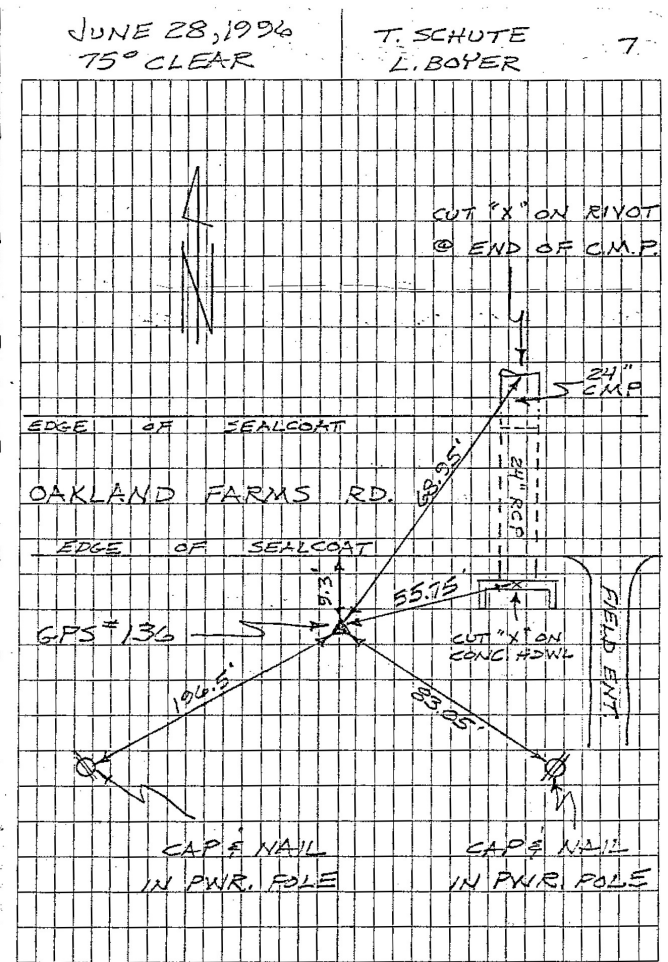
Mapping Angle: **1°53'17.2"** Combination Scale Factor: **0.9999211232**

Iowa Regional Coordinate System, Zone 5, Waterloo LCC

IaRCS Zone 5 Northing: **8400752.647sft** Easting: **21451206.256sft**

Mapping Angle: **-0°07'19.2"** Combination Scale Factor: **0.9999981225**

GPS #136	REFERENCE TIES
GPS #136, PLACED 5/8" X 8'0" ALUMINUM ROD WITH ALUMINUM CAP, STAMPED "GPS 136", AND ACCESS COVER, 8" DEEP. MON. 4" BELOW ACCESS COVER.	
ELEV. = 767.79 NAVD-88	
N. 3638483.6600 E. 5673010.6766 U.S. SURVEY FEET NAD-83 (1991)	
SCALE FACTOR	0.999952718
CONVERGENCE	01°53'17.25"



This document was prepared by Dan Corbin, Inc. for The City of Dubuque, Iowa.