

City of Dubuque, Iowa

07/11/2020

Units: US Survey Feet

Point ID: 140

Stamping on Disk: GPS 140

NAD 83(NA2011) Latitude: N42°30'39.51500" Longitude: W90°43'02.37961"

NAVD 88 Ortho Height: 900.981sft Ellip. Ht: 794.360sft Geoid18(Conus)

Horizontal Datum: NAD 83(NA2011) - Vertical Datum: NAVD 1988

Iowa North Zone (1401) Northing: 3661602.281sft Easting: 5671379.635sft

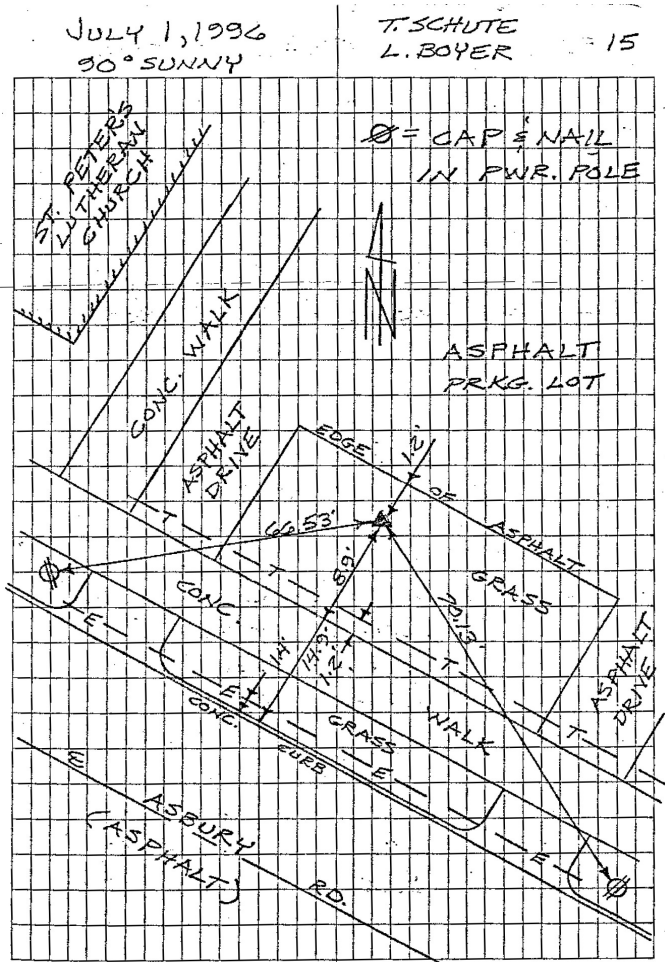
Mapping Angle: 1°53'09.4" Combination Scale Factor: 0.9999111203

Iowa Regional Coordinate System, Zone 5, Waterloo LCC

IaRCS Zone 5 Northing: 8423916.132sft Easting: 21450387.509sft

Mapping Angle: -0°07'27.6" Combination Scale Factor: 0.9999918400

GPS #140	REFERENCE TIES
GPS #140, PLACED 5/8" x 13/6" ALUMINUM ROD WITH ALUMINUM CAP, STAMPED "GPS 140", AND ACCESS COVER, 4" DEEP. MON. 4" BELOW ACCESS COVER.	
ELEV. = 201.20 NAVD-88	
N. 3661602.1583 E. 5671380.1277 U.S. SURVEY FEET NAD-83(1991)	
SCALE FACTOR 0.999949069 CONVERGENCE 01°53'09.32"	



This document was prepared by Dan Corbin, Inc. for The City of Dubuque, Iowa.