

City of Dubuque, Iowa

07/11/2020

Units: US Survey Feet

Point ID: 143

Stamping on Disk: GPS 143

NAD 83(NA2011) Latitude: N42°33'33.49075"

Longitude: W90°42'40.77527"

NAVD 88 Ortho Height: 616.293sft

Ellip. Ht: 509.565sft

Geoid18(Conus)

Horizontal Datum: NAD 83(NA2011) - Vertical Datum: NAVD 1988

Iowa North Zone (1401) Northing: 3679257.578sft

Easting: 5672415.959sft

Mapping Angle: 1°53'24.0"

Combination Scale Factor: 0.9999227916

Iowa Regional Coordinate System, Zone 5, Waterloo LCC

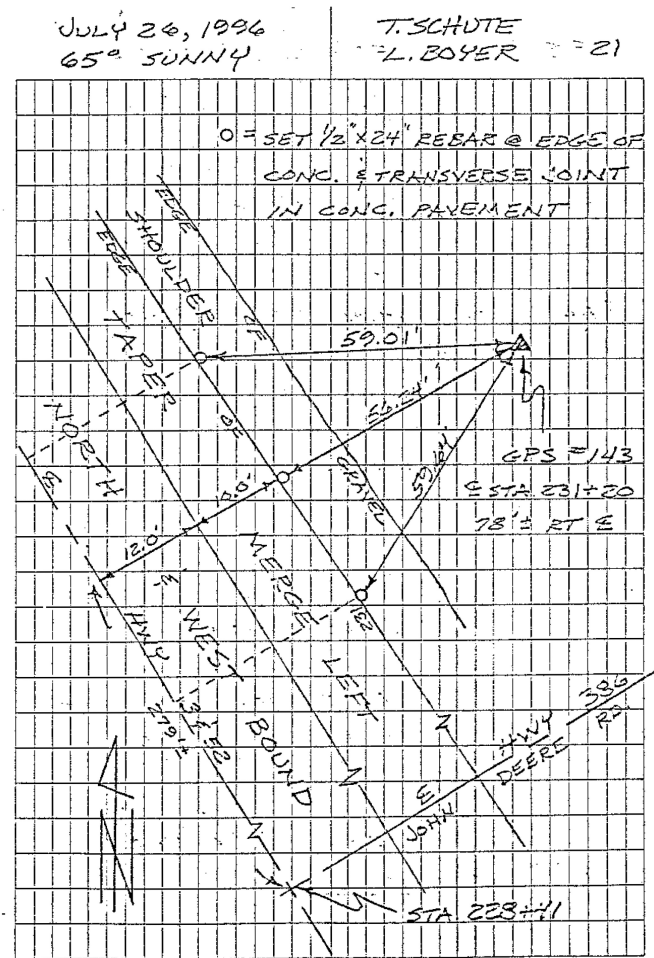
IaRCS Zone 5 Northing: 8441525.647sft

Easting: 21452042.673sft

Mapping Angle: -0°07'13.4"

Combination Scale Factor: 1.0000052692

GPS #143	REFERENCE TIES
GPS #143, PLACED 5/8" X 20'0" ALUMINUM ROD WITH ALUMINUM CAP, STAMPED "GPS 143", AND ACCESS COVER, 4" DEEP. MON. 6" BELOW ACCESS COVER.	
ELEV. = 616.46 NAVD - 88	
N. 3679257.2551 E. 5672416.3103 U.S. SURVEY FEET NAD-83(1991)	
SCALE FACTOR 0.999947148 CONVERGENCE 01°53'24.03"	



This document was prepared by Dan Corbin, Inc. for The City of Dubuque, Iowa.