

City of Dubuque, Iowa

07/11/2020

Units: US Survey Feet

Point ID: 146

Stamping on Disk: GPS 146

NAD 83(NA2011) Latitude: N42°28'50.24936" Longitude: W90°44'10.46527"

NAVD 88 Ortho Height: 713.083sft Ellip. Ht: 606.605sft Geoid18(Conus)

Horizontal Datum: NAD 83(NA2011) - Vertical Datum: NAVD 1988

Iowa North Zone (1401) Northing: 3650380.037sft Easting: 5666644.675sft

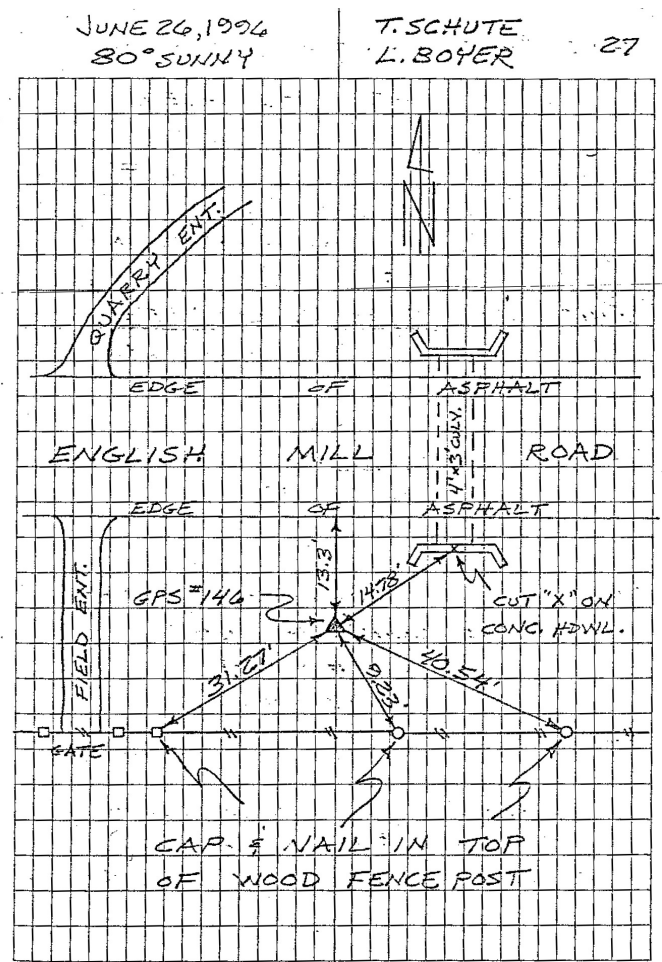
Mapping Angle: 1°52'23.2" Combination Scale Factor: 0.9999216751

Iowa Regional Coordinate System, Zone 5, Waterloo LCC

IaRCS Zone 5 Northing: 8412865.999sft Easting: 21445261.401sft

Mapping Angle: -0°08'13.3" Combination Scale Factor: 1.0000014259

GPS #146	REFERENCE TIES
GPS #146, PLACED 5/8" X 9'6" ALUMINUM ROD WITH ALUMINUM CAP, STAMPED "GPS 146", AND ACCESS COVER, 5" DEEP. MON. 9" BELOW ACCESS COVER.	
ELEV. = 713.17 NAVD-88	
N. 3650379.9614 E. 5666645.1524 U.S. SURVEY FEET NAD-83(1991)	
SCALE FACTOR 0.999950670 CONVERGENCE 01°52'23.25"	



This document was prepared by Dan Corbin, Inc. for The City of Dubuque, Iowa.