

City of Dubuque, Iowa

07/11/2020

Units: US Survey Feet

Point ID: 149

Stamping on Disk: GPS 149

NAD 83(NA2011) Latitude: N42°32'26.14154" Longitude: W90°44'17.20141"

NAVD 88 Ortho Height: 900.692sft Ellip. Ht: 794.159sft Geoid18(Conus)

Horizontal Datum: NAD 83(NA2011) - Vertical Datum: NAVD 1988

Iowa North Zone (1401) Northing: 3672206.586sft Easting: 5665426.333sft

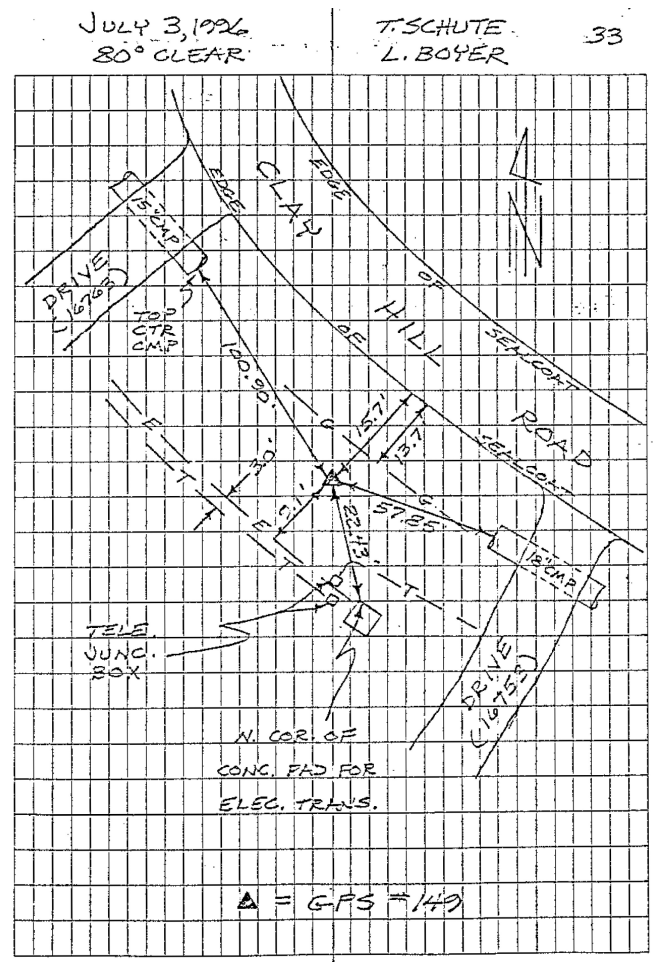
Mapping Angle: 1°52'18.7" Combination Scale Factor: 0.9999098564

Iowa Regional Coordinate System, Zone 5, Waterloo LCC

IaRCS Zone 5 Northing: 8434723.629sft Easting: 21444809.402sft

Mapping Angle: -0°08'18.4" Combination Scale Factor: 0.9999925177

GPS #149	REFERENCE TIES
GPS #149, PLACED 5/8" X 16'0" ALUMINUM ROD WITH ALUMINUM CAP, STAMPED "GPS 149", AND ACCESS COVER, 4" DEEP. MON. 4" BELOW ACCESS COVER	
ELEV. = 900.93 NAVD - 88	
N. 3672206.3174 E. 5665426.7795 U.S. SURVEY FEET NAD-83 (1991)	
SCALE FACTOR	0.999947816
CONVERGENCE	01° 52' 18.68"



This document was prepared by Dan Corbin, Inc. for The City of Dubuque, Iowa.