

City of Dubuque, Iowa

07/11/2020

Units: US Survey Feet

Point ID: 151

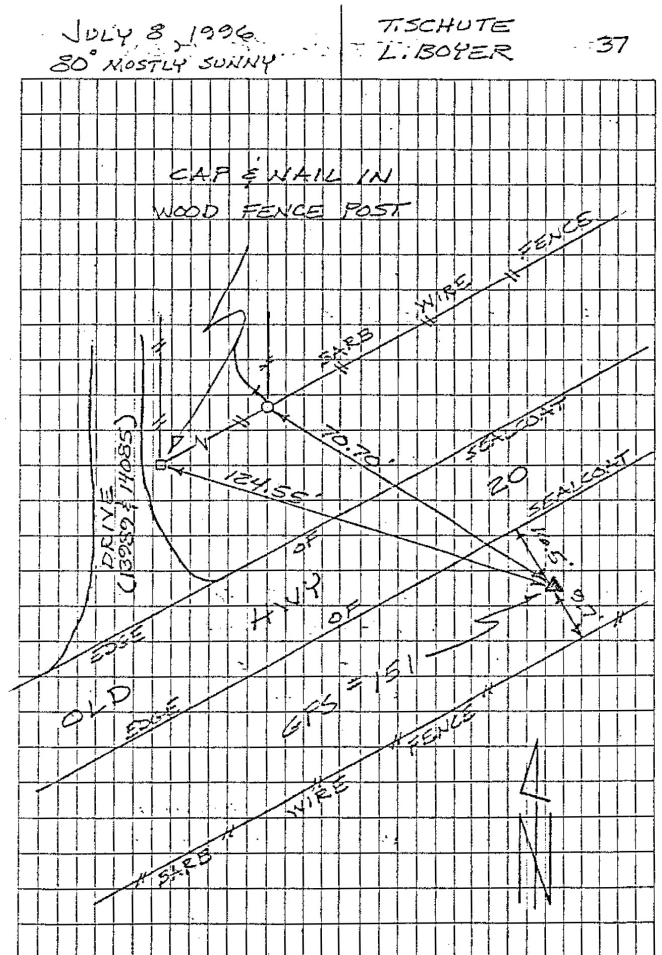
Stamping on Disk: GPS 151

NAD 83(NA2011) Latitude: N42°29'02.27692" Longitude: W90°45'27.33329"
NAVD 88 Ortho Height: 840.872sft Ellip. Ht: 734.506sft Geoid18(Conus)

Horizontal Datum: NAD 83(NA2011) - Vertical Datum: NAVD 1988
Iowa North Zone (1401) Northing: 3651409.400sft Easting: 5660848.450sft
Mapping Angle: 1°51'31.1" Combination Scale Factor: 0.9999153741

Iowa Regional Coordinate System, Zone 5, Waterloo LCC
IaRCS Zone 5 Northing: 8414098.137sft Easting: 21439504.387sft
Mapping Angle: -0°09'05.3" Combination Scale Factor: 0.9999960701

| GPS #151 | REFERENCE TIES |
|---|----------------|
| | |
| | |
| GPS #151, PLACED 5/8" X 16'0" ALUMINUM ROD WITH ALUMINUM CAP, STAMPED "GPS 151", AND ACCESS COVER, 5" DEEP, MON. 7" BELOW ACCESS COVER. | |
| ELEV. = 841.00 NAVD-88 | |
| N. 3651409.2899 E. 5660848.9434 U.S. SURVEY FEET NAD-83(1991) | |
| SCALE FACTOR 0.999950483 CONVERGENCE 01° 51' 31.15" | |
| | |
| | |



This document was prepared by Dan Corbin, Inc. for The City of Dubuque, Iowa.