

City of Dubuque, Iowa

07/11/2020

Units: US Survey Feet

Point ID: 154

Stamping on Disk: GPS 154

NAD 83(NA2011) Latitude: N42°32'09.29307" Longitude: W90°45'19.15240"

NAVD 88 Ortho Height: 825.506sft Ellip. Ht: 719.073sft Geoid18(Conus)

Horizontal Datum: NAD 83(NA2011) - Vertical Datum: NAVD 1988

Iowa North Zone (1401) Northing: 3670350.901sft Easting: 5660846.562sft

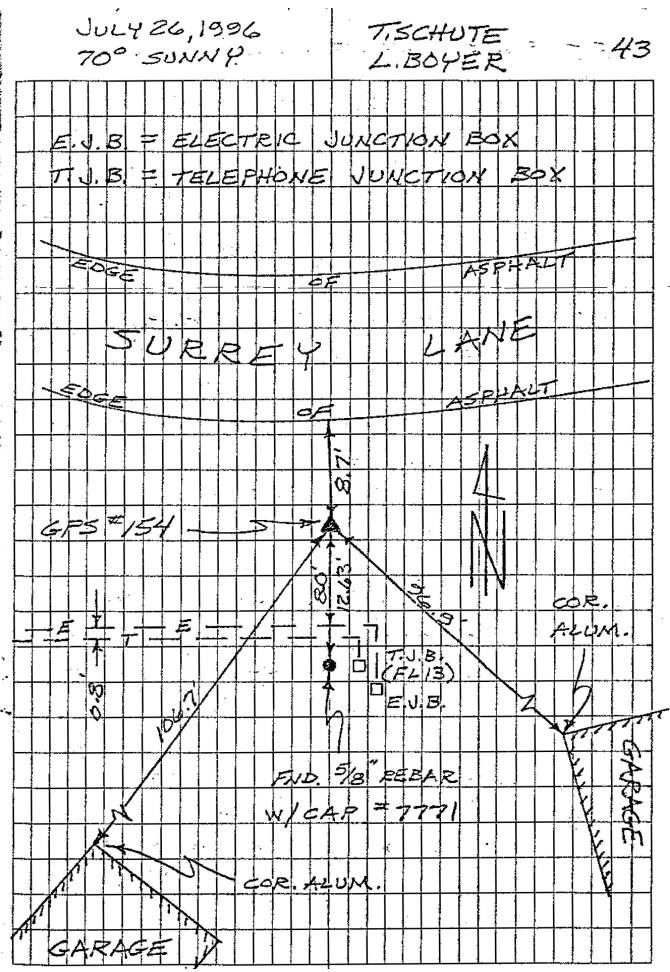
Mapping Angle: 1°51'36.7" Combination Scale Factor: 0.9999136288

Iowa Regional Coordinate System, Zone 5, Waterloo LCC

IaRCS Zone 5 Northing: 8433029.600sft Easting: 21440166.970sft

Mapping Angle: -0°09'00.3" Combination Scale Factor: 0.9999967169

| GPS #154 | REFERENCE TIES |
|--|----------------|
| GPS #154, PLACED 5/8" x 8'0" ALUMINUM ROD WITH ALUMINUM CAP, STAMPED "GPS 154", AND ACCESS COVER, 4" DEEP. MON. 5" BELOW ACCESS COVER. | |
| ELEV = 825.70 NAVD -88 | |
| N. 3670350.5913 E. 5660847.1042 U.S. SURVEY FEET NAD-83 (1991) | |
| SCALE FACTOR | 0.999947999 |
| CONVERGENCE | 01° 51' 36.70" |



This document was prepared by Dan Corbin, Inc. for The City of Dubuque, Iowa.