

City of Dubuque, Iowa

07/11/2020

Units: US Survey Feet

Point ID: 155

Stamping on Disk: GPS 155

NAD 83(NA2011) Latitude: N42°27'50.12516" Longitude: W90°46'11.75720"

NAVD 88 Ortho Height: 938.039sft Ellip. Ht: 831.783sft Geoid18(Conus)

Horizontal Datum: NAD 83(NA2011) - Vertical Datum: NAVD 1988

Iowa North Zone (1401) Northing: 3644001.624sft Easting: 5657757.476sft

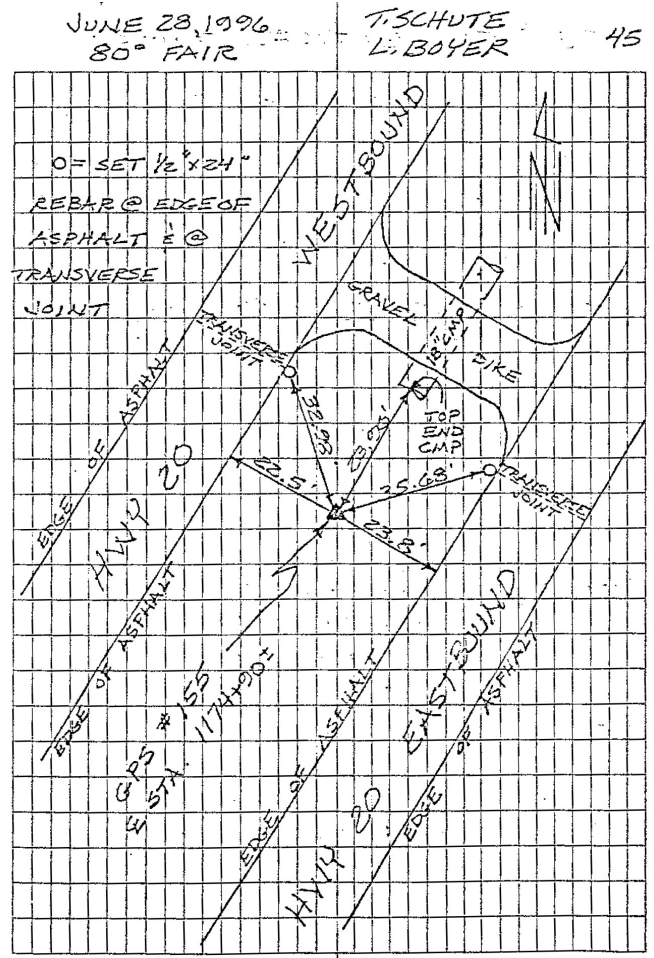
Mapping Angle: 1°51'01.0" Combination Scale Factor: 0.9999119008

Iowa Regional Coordinate System, Zone 5, Waterloo LCC

IaRCS Zone 5 Northing: 8406802.749sft Easting: 21436155.217sft

Mapping Angle: -0°09'35.0" Combination Scale Factor: 0.9999918959

GPS #155	REFERENCE TIES
GPS #155, PLACED 5/8" X 10'0" ALUMINUM ROD WITH ALUMINUM GAP, STAMPED "GPS 155", AND ACCESS COVER, 5" DEEP. MON. 4" BELOW ACCESS COVER.	
ELEV. = 938.19 NAVD - 88	
N. 3644001.6191 E. 5657758.0539 U.S. SURVEY FEET NAD-83(1991)	
SCALE FACTOR 0.999951659 CONVERGENCE 01°51'01.04"	



This document was prepared by Dan Corbin, Inc. for The City of Dubuque, Iowa.