

City of Dubuque, Iowa

07/11/2020

Units: US Survey Feet

Point ID: 156

Stamping on Disk: GPS 156

NAD 83(NA2011) Latitude: N42°29'00.65148" Longitude: W90°46'30.67241"

NAVD 88 Ortho Height: 860.191sft Ellip. Ht: 753.926sft Geoid18(Conus)

Horizontal Datum: NAD 83(NA2011) - Vertical Datum: NAVD 1988

Iowa North Zone (1401) Northing: 3651091.511sft Easting: 5656110.431sft

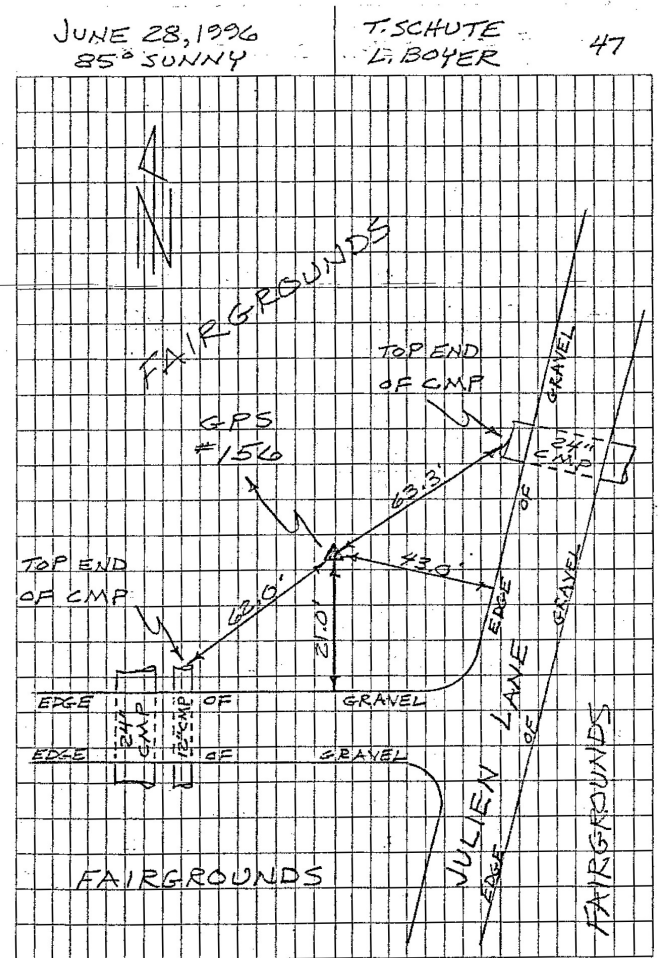
Mapping Angle: 1°50'48.2" Combination Scale Factor: 0.9999144710

Iowa Regional Coordinate System, Zone 5, Waterloo LCC

IaRCS Zone 5 Northing: 8413946.620sft Easting: 21434757.748sft

Mapping Angle: -0°09'48.0" Combination Scale Factor: 0.9999958236

GPS #156	REFERENCE TIES
GPS #156, PLACED 5/8" X 8' 0" ALUMINUM ROD WITH ALUMINUM CAP, STAMPED "GPS 156", AND ACCESS COVER, 4" DEEP. MON. 4" BELOW ACCESS COVER.	
ELEV. = 860.33 NAVD-88	
N. 3651091.4201 E. 5656110.9776 U.S. SURVEY FEET. NAD-83 (1991)	
SCALE FACTOR	0.999950508
CONVERGENCE	01° 50' 48.22"



This document was prepared by Dan Corbin, Inc. for The City of Dubuque, Iowa.