

City of Dubuque, Iowa

07/11/2020

Units: US Survey Feet

Point ID: 157

Stamping on Disk: GPS 157

NAD 83(NA2011) Latitude: N42°30'39.67346" Longitude: W90°46'39.87830"

NAVD 88 Ortho Height: 961.918sft Ellip. Ht: 855.641sft Geoid18(Conus)

Horizontal Datum: NAD 83(NA2011) - Vertical Datum: NAVD 1988

Iowa North Zone (1401) Northing: 3661088.046sft Easting: 5655098.287sft

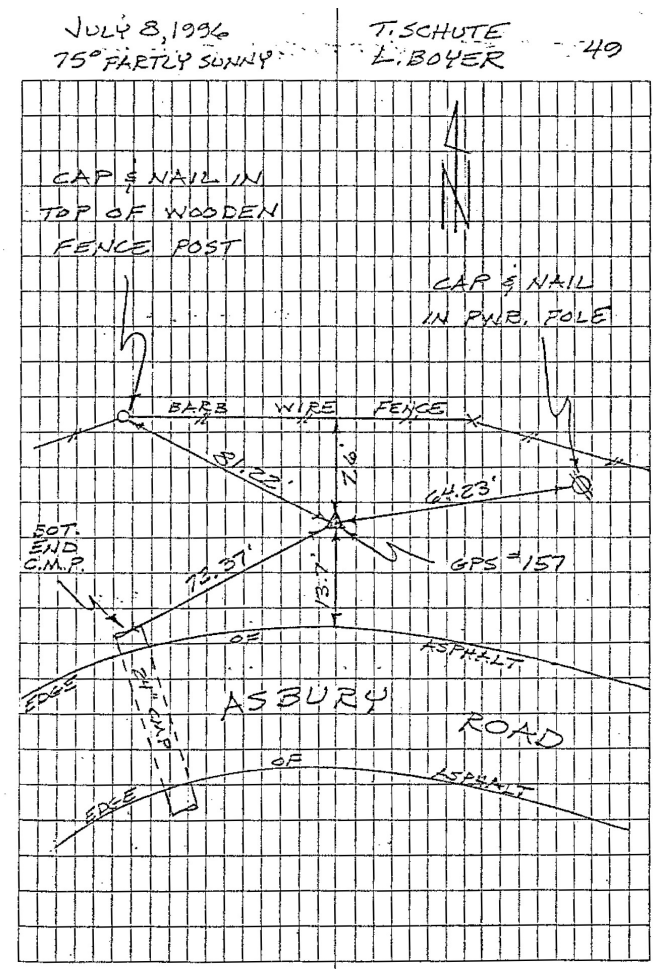
Mapping Angle: 1°50'42.0" Combination Scale Factor: 0.9999081893

Iowa Regional Coordinate System, Zone 5, Waterloo LCC

IaRCS Zone 5 Northing: 8423973.329sft Easting: 21434096.811sft

Mapping Angle: -0°09'54.6" Combination Scale Factor: 0.9999910607

GPS #157	REFERENCE TIES
GPS #157, PLACED 5/8" X 20'0" ALUMINUM ROD WITH ALUMINUM CAP, STAMPED "GPS 157", AND ACCESS COVER, 3" DEEP. MON. 7" BELOW ACCESS COVER.	
ELEV. = 962.05 NAVD -88	
N. 3661087.8870 E. 5655098.8853 U.S. SURVEY FEET NAD-83 (1991)	
SCALE FACTOR	0.999949087
CONVERGENCE	01°50'41.98"



This document was prepared by Dan Corbin, Inc. for The City of Dubuque, Iowa.