

City of Dubuque, Iowa

07/11/2020

Units: US Survey Feet

Point ID: 159

Stamping on Disk: GPS 159

NAD 83(NA2011) Latitude: N42°29'09.20569" Longitude: W90°47'21.27525"

NAVD 88 Ortho Height: 914.822sft Ellip. Ht: 808.638sft Geoid18(Conus)

Horizontal Datum: NAD 83(NA2011) - Vertical Datum: NAVD 1988

Iowa North Zone (1401) Northing: 3651835.133sft Easting: 5652293.088sft

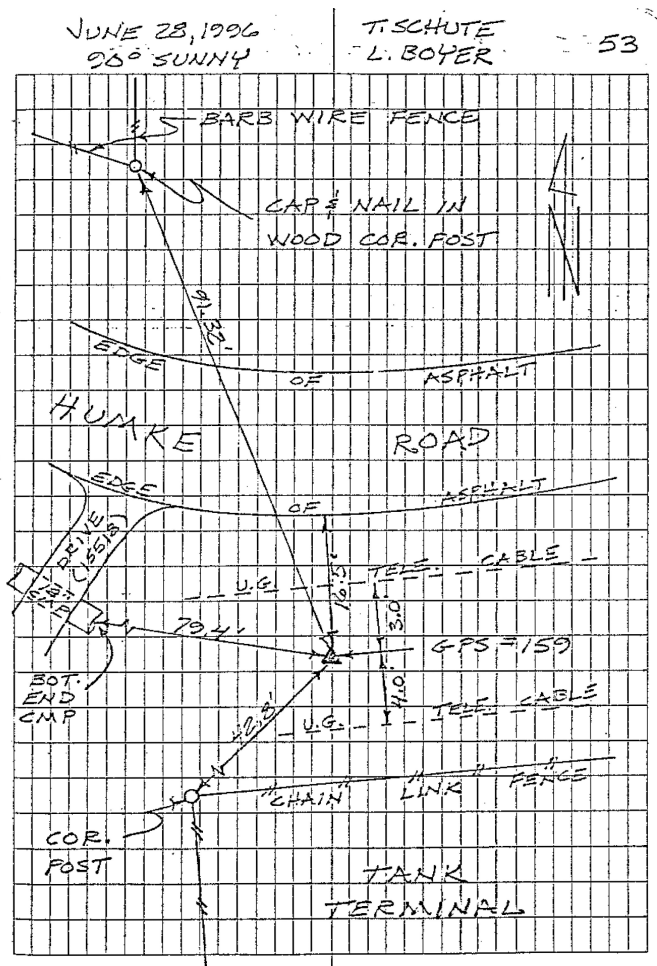
Mapping Angle: 1°50'13.9" Combination Scale Factor: 0.9999117243

Iowa Regional Coordinate System, Zone 5, Waterloo LCC

IaRCS Zone 5 Northing: 8414823.749sft Easting: 21430968.527sft

Mapping Angle: -0°10'22.2" Combination Scale Factor: 0.9999937897

GPS #159	REFERENCE TIES
GPS #159, PLACED 5/8" X 8'0" ALUMINUM ROD WITH ALUMINUM CAP, STAMPED "GPS 159", AND ACCESS COVER, 6" DEEP, MON, 3" BELOW ACCESS COVER.	
ELEV. = 914.955 NAVD-88	
N. 3651835.0925 E. 5652293.6027 U.S. SURVEY FEET NAD-83(1991)	
SCALE FACTOR	0.999950376
CONVERGENCE	01° 50' 13.93"



This document was prepared by Dan Corbin, Inc. for The City of Dubuque, Iowa.