

City of Dubuque, Iowa

07/11/2020

Units: US Survey Feet

Point ID: 161

Stamping on Disk: GPS 161

NAD 83(NA2011) Latitude: N42°30'47.70860" Longitude: W90°47'28.75515"

NAVD 88 Ortho Height: 962.524sft Ellip. Ht: 856.328sft Geoid18(Conus)

Horizontal Datum: NAD 83(NA2011) - Vertical Datum: NAVD 1988

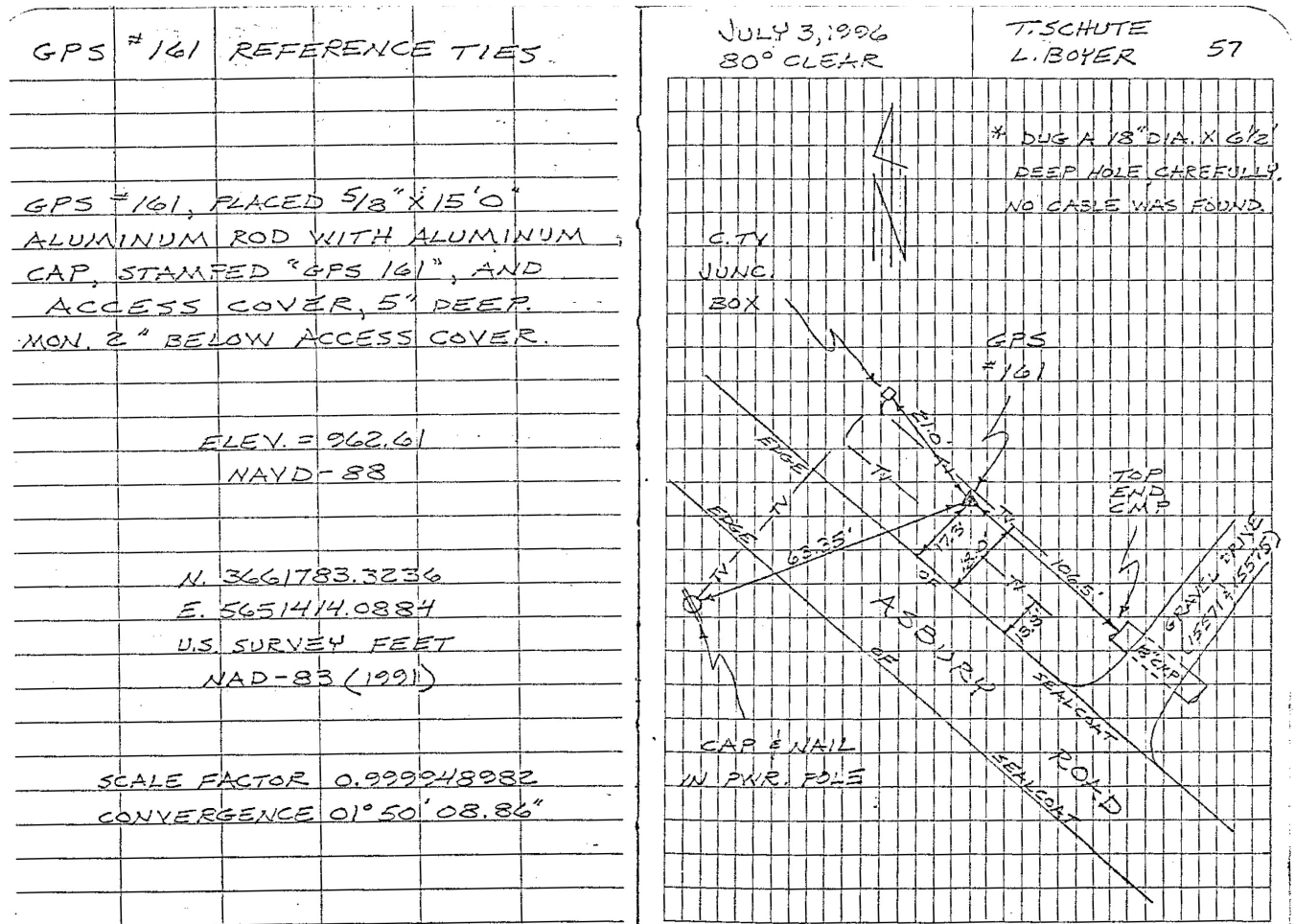
Iowa North Zone (1401) Northing: 3661783.461sft Easting: 5651413.511sft

Mapping Angle: 1°50'08.9" Combination Scale Factor: 0.9999080512

Iowa Regional Coordinate System, Zone 5, Waterloo LCC

IaRCS Zone 5 Northing: 8424797.634sft Easting: 21430438.390sft

Mapping Angle: -0°10'27.6" Combination Scale Factor: 0.9999915941



This document was prepared by Dan Corbin, Inc. for The City of Dubuque, Iowa.