

City of Dubuque, Iowa

07/11/2020

Units: US Survey Feet

Point ID: **163**

Stamping on Disk: **2020-163**

NAD 83(NA2011) Latitude: **N42°22'43.36576"** Longitude: **W90°51'33.88398"**

NAVD 88 Ortho Height: **1056.510sft** Ellip. Ht: **950.698sft** **Geoid18(Conus)**

Horizontal Datum: NAD 83(NA2011) - Vertical Datum: NAVD 1988

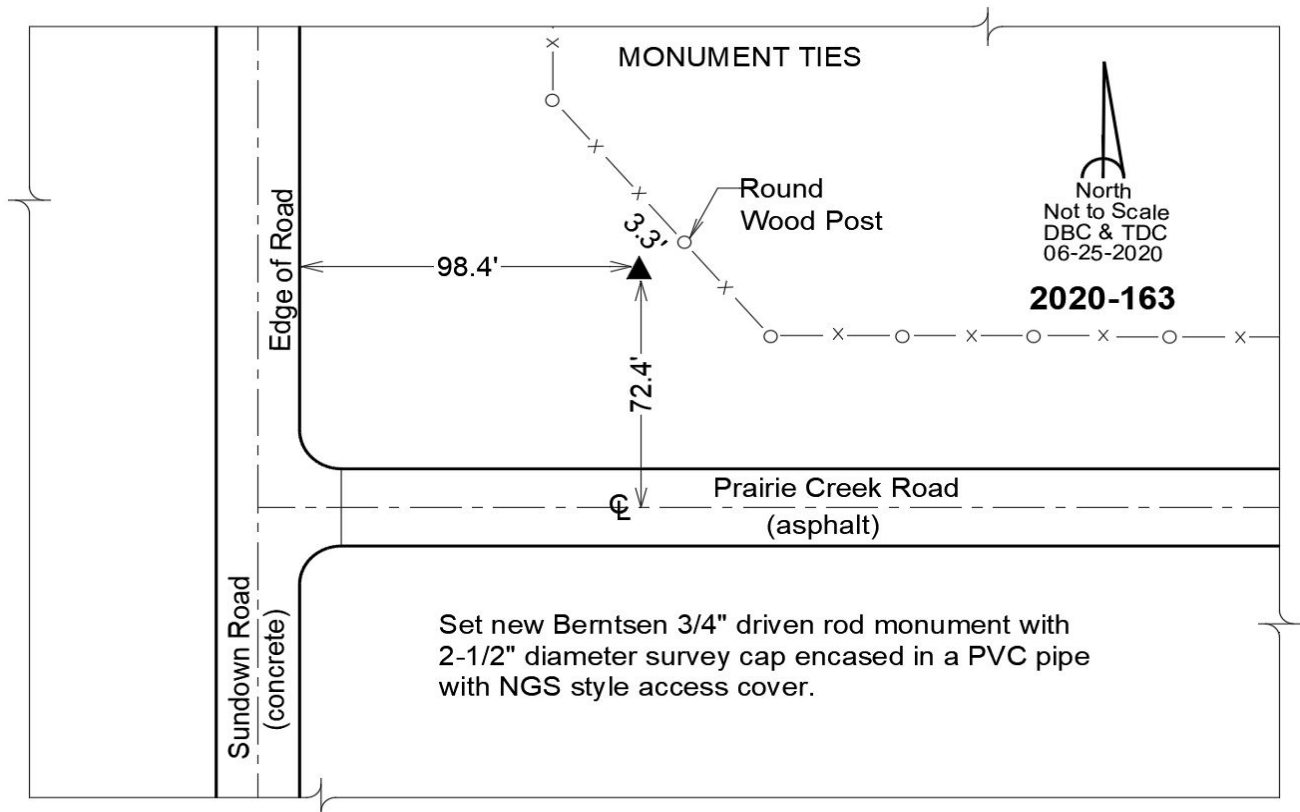
Iowa North Zone (1401) Northing: **3612197.139sft** Easting: **5634595.752sft**

Mapping Angle: **1°47'22.7"** Combination Scale Factor: **0.9999125739**

Iowa Regional Coordinate System, Zone 5, Waterloo LCC

IaRCS Zone 5 Northing: **8375827.650sft** Easting: **21411890.458sft**

Mapping Angle: **-0°13'11.2"** Combination Scale Factor: **0.9999904239**



This document was prepared by Dan Corbin, Inc. for The City of Dubuque, Iowa.