

City of Dubuque, Iowa

07/11/2020

Units: US Survey Feet

Point ID: **165**

Stamping on Disk: **2020-165**

NAD 83(NA2011) Latitude: **N42°34'26.74672"** Longitude: **W90°51'29.20985"**

NAVD 88 Ortho Height: **891.700sft** Ellip. Ht: **785.849sft** **Geoid18(Conus)**

Horizontal Datum: NAD 83(NA2011) - Vertical Datum: NAVD 1988

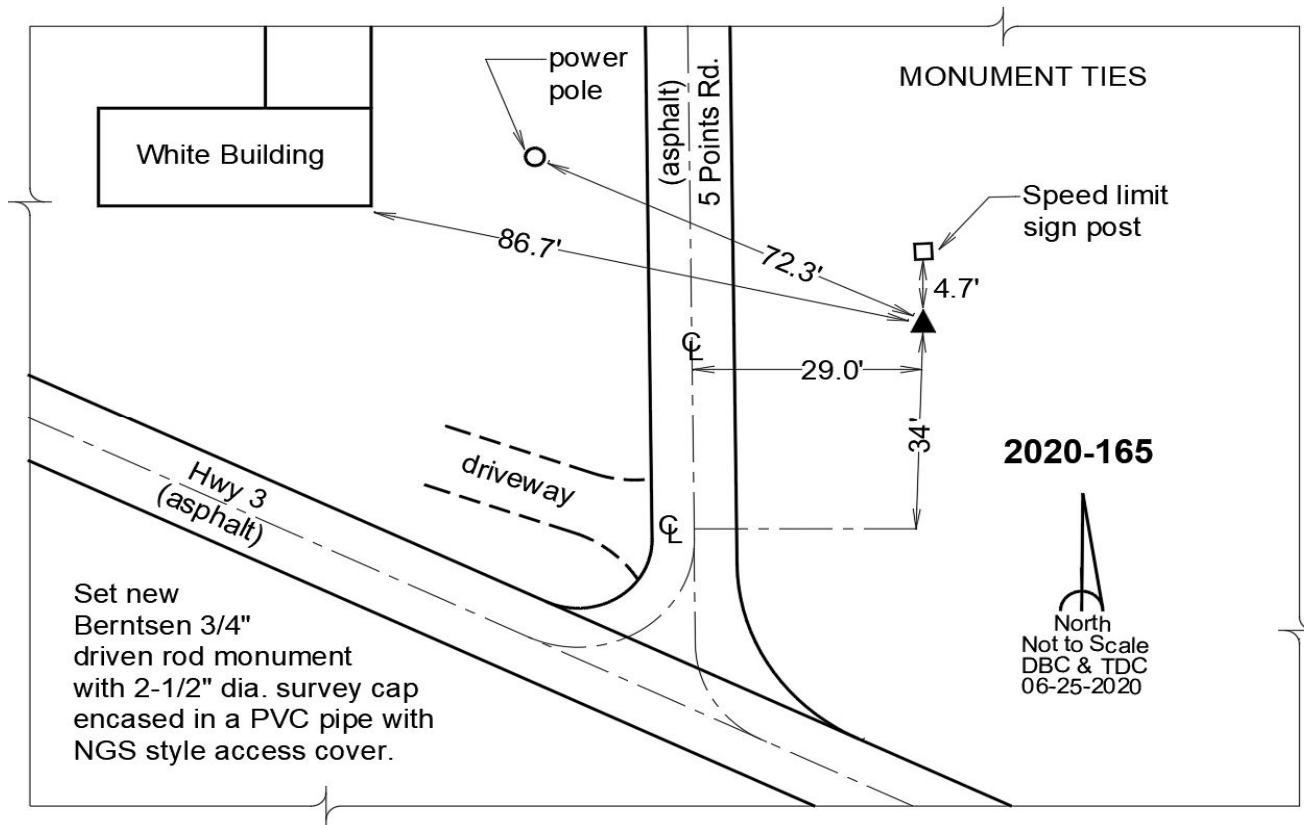
Iowa North Zone (1401) Northing: **3683376.117sft** Easting: **5632721.625sft**

Mapping Angle: **1°47'25.9"** Combination Scale Factor: **0.9999091333**

Iowa Regional Coordinate System, Zone 5, Waterloo LCC

IaRCS Zone 5 Northing: **8447034.579sft** Easting: **21412513.868sft**

Mapping Angle: **-0°13'11.0"** Combination Scale Factor: **0.9999981792**



This document was prepared by Dan Corbin, Inc. for The City of Dubuque, Iowa.