

City of Dubuque, Iowa

07/11/2020

Units: US Survey Feet

Point ID: **166**

Stamping on Disk: **2020-166**

NAD 83(NA2011) Latitude: **N42°35'36.00401"** Longitude: **W90°42'39.82202"**

NAVD 88 Ortho Height: **909.010sft** Ellip. Ht: **802.283sft** **Geoid18(Conus)**

Horizontal Datum: NAD 83(NA2011) - Vertical Datum: NAVD 1988

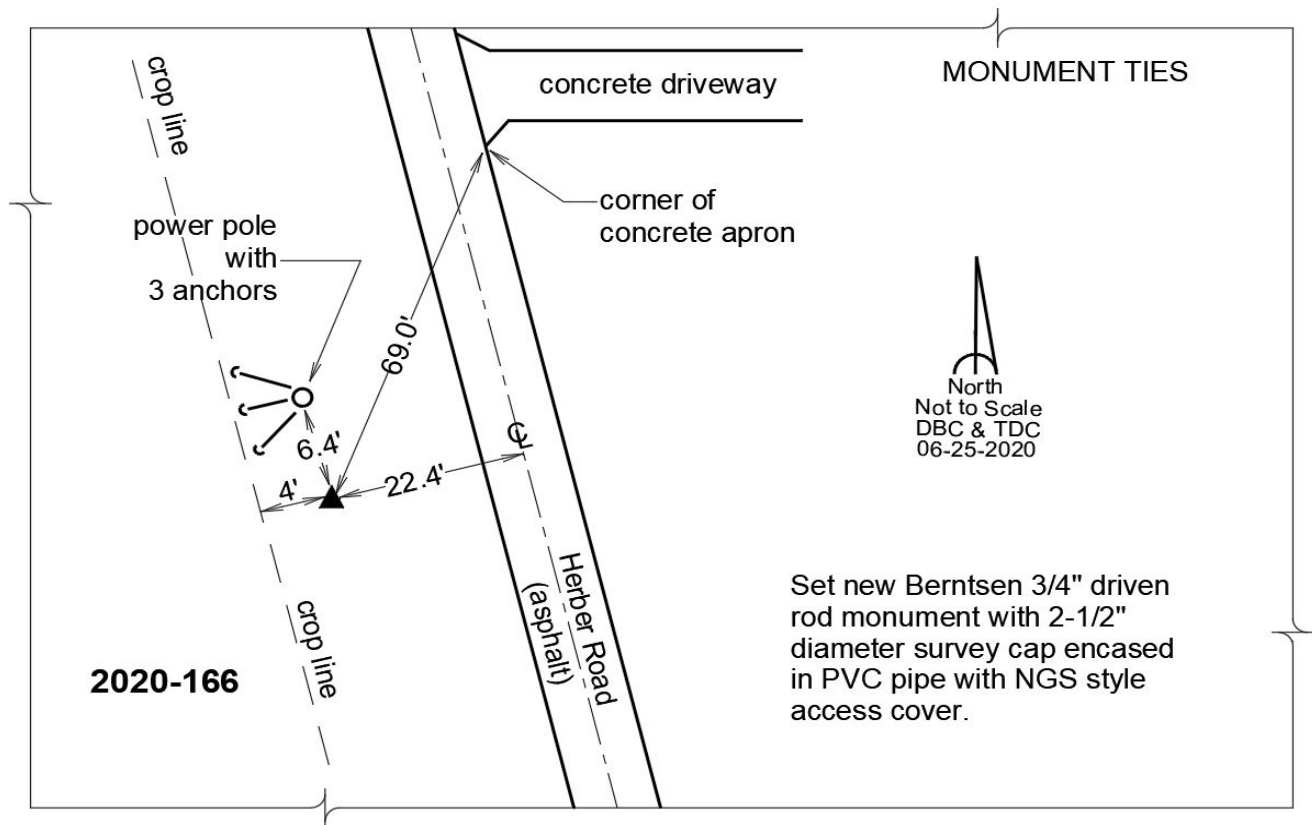
Iowa North Zone (1401) Northing: **3691655.277sft** Easting: **5672078.187sft**

Mapping Angle: **1°53'24.7"** Combination Scale Factor: **0.9999078582**

Iowa Regional Coordinate System, Zone 5, Waterloo LCC

IaRCS Zone 5 Northing: **8453928.593sft** Easting: **21452140.047sft**

Mapping Angle: **-0°07'13.0"** Combination Scale Factor: **0.9999912665**



This document was prepared by Dan Corbin, Inc. for The City of Dubuque, Iowa.