

2014 City of West Des Moines, Iowa
Horizontal Datum: **NAD 83(2011)** - Vertical Datum: **NAVD 1988**
Iowa South Zone (1402)
Iowa Regional Coordinate System Zone 8 Ames-Des Moines
US Survey Feet

Point Name: **WDM-HZ #4**

Network Point ID: **2004**

NAD 83(2011)

Latitude: **N41°35'27.76678"**

Longitude: **W93°49'40.74467"**

NAVD 88 Ortho Height: **1012.400sft**

Ellip. Ht: **911.059sft**

Geoid12A

Mapping Angle: **-0°12'58"**

Combination Scale Factor: **0.999928043**

Iowa South Zone (1402)

Northing: **579848.235sft**

Easting: **1550698.258sft**

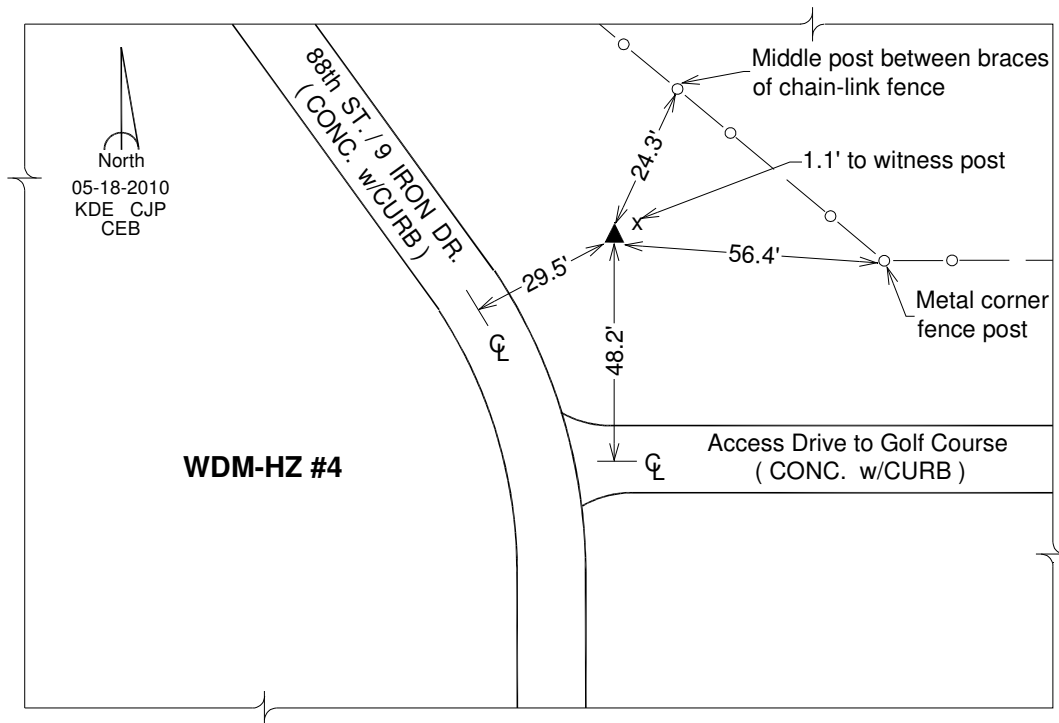
IaRCS Zone 8

Northing: **7488638.412sft**

Easting: **18469547.631sft**

Designation: West Des Moines GPS Control Pt. - WDM-HZ #4

Monument Type: 3/4" x 9'-0" long Berntsen Top Security Rod monument with a 2-1/2" dia. domed survey cap and permanent magnet encased in a white PVC pipe with a NGS style alum. access cover.



This document was prepared by DCI on June 13, 2014 for use by The City of West Des Moines, Iowa