

2014 City of West Des Moines, Iowa
Horizontal Datum: **NAD 83(2011)** - Vertical Datum: **NAVD 1988**
Iowa South Zone (1402)
Iowa Regional Coordinate System Zone 8 Ames-Des Moines
US Survey Feet

Point Name: **WDM-HZ #6**

Network Point ID: **2006**

NAD 83(2011)

Latitude: **N41°34'03.14279"**

Longitude: **W93°45'22.87289"**

NAVD 88 Ortho Height: **914.010sft**

Ellip. Ht: **812.044sft**

Geoid12A

Mapping Angle: **-0°10'08"**

Combination Scale Factor: **0.999930060**

Iowa South Zone (1402)

Northing: **571217.209sft**

Easting: **1570267.233sft**

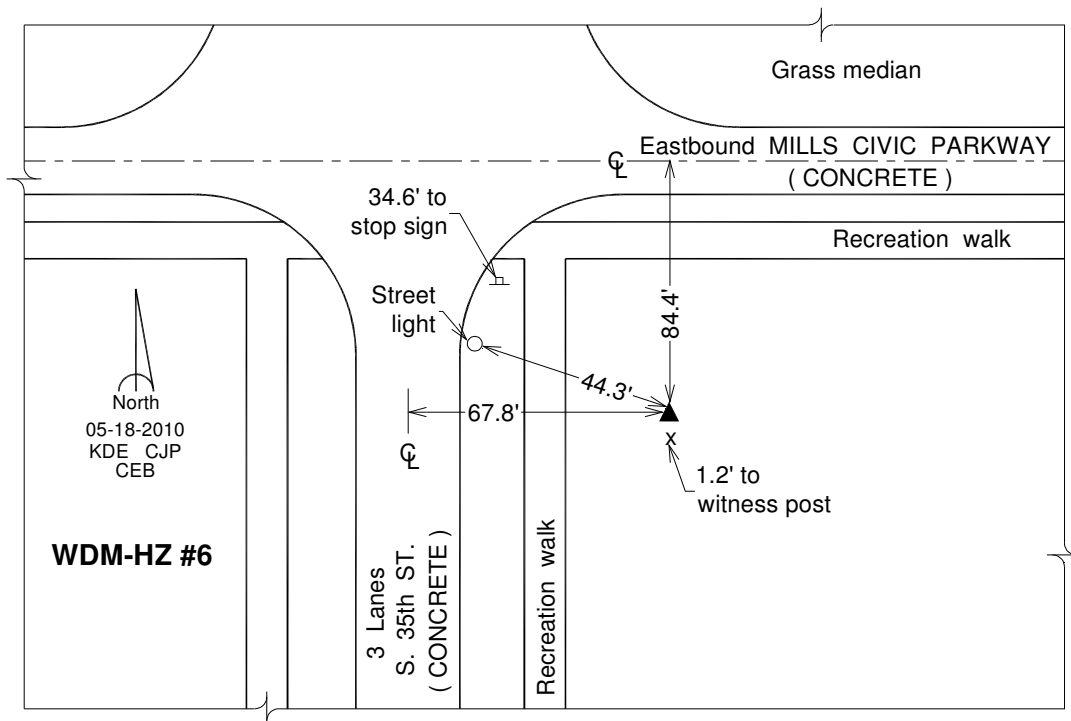
laRCS Zone 8

Northing: **7480055.486sft**

Easting: **18489139.230sft**

Designation: West Des Moines GPS Control Pt. - WDM-HZ #6

Monument Type: 3/4" x 9'-0" long Berntsen Top Security Rod monument with a 2-1/2" dia. domed survey cap and permanent magnet encased in a white PVC pipe with a NGS style alum. access cover.



This document was prepared by DCI on June 13, 2014 for use by The City of West Des Moines, Iowa