

2014 City of West Des Moines, Iowa
Horizontal Datum: **NAD 83(2011)** - Vertical Datum: **NAVD 1988**
Iowa South Zone (1402)
Iowa Regional Coordinate System Zone 8 Ames-Des Moines
US Survey Feet

Point Name: **WDM-HZ #7**

Network Point ID: **2007**

NAD 83(2011) Latitude: **N41°33'49.34016"**

Longitude: **W93°47'34.49623"**

NAVD 88 Ortho Height: **956.940sft**

Ellip. Ht: **855.210sft**

Geoid12A

Mapping Angle: **-0°11'35"**

Combination Scale Factor: **0.999927575**

Iowa South Zone (1402)

Northing: **569851.773sft**

Easting: **1560257.608sft**

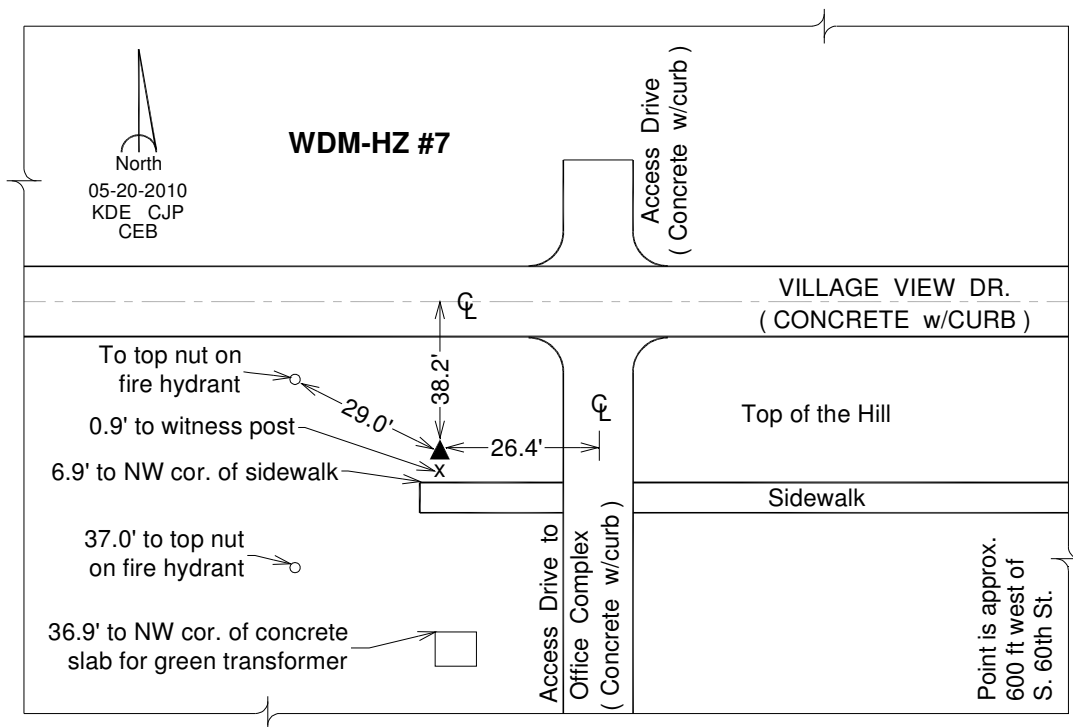
laRCS Zone 8

Northing: **7478665.079sft**

Easting: **18479132.383sft**

Designation: West Des Moines GPS Control Pt. - WDM-HZ #7

Monument Type: 3/4" x 9'-0" long Berntsen Top Security Rod monument with a 2-1/2" dia. domed survey cap and permanent magnet encased in a white PVC pipe with a NGS style alum. access cover.



This document was prepared by DCI on June 13, 2014 for use by The City of West Des Moines, Iowa