

**2014 City of West Des Moines, Iowa**  
Horizontal Datum: **NAD 83(2011)** - Vertical Datum: **NAVD 1988**  
Iowa South Zone (1402)  
Iowa Regional Coordinate System Zone 8 Ames-Des Moines  
US Survey Feet

Point Name: **WDM-HZ #8**

Network Point ID: **2008**

NAD 83(2011)

Latitude: **N41°33'55.02761"**

Longitude: **W93°49'41.35127"**

NAVD 88 Ortho Height: **988.920sft**

Ellip. Ht: **887.441sft**

**Geoid12A**

Mapping Angle: **-0°12'58"**

Combination Scale Factor: **0.999926212**

Iowa South Zone (1402)

Northing: **570461.850sft**

Easting: **1550616.753sft**

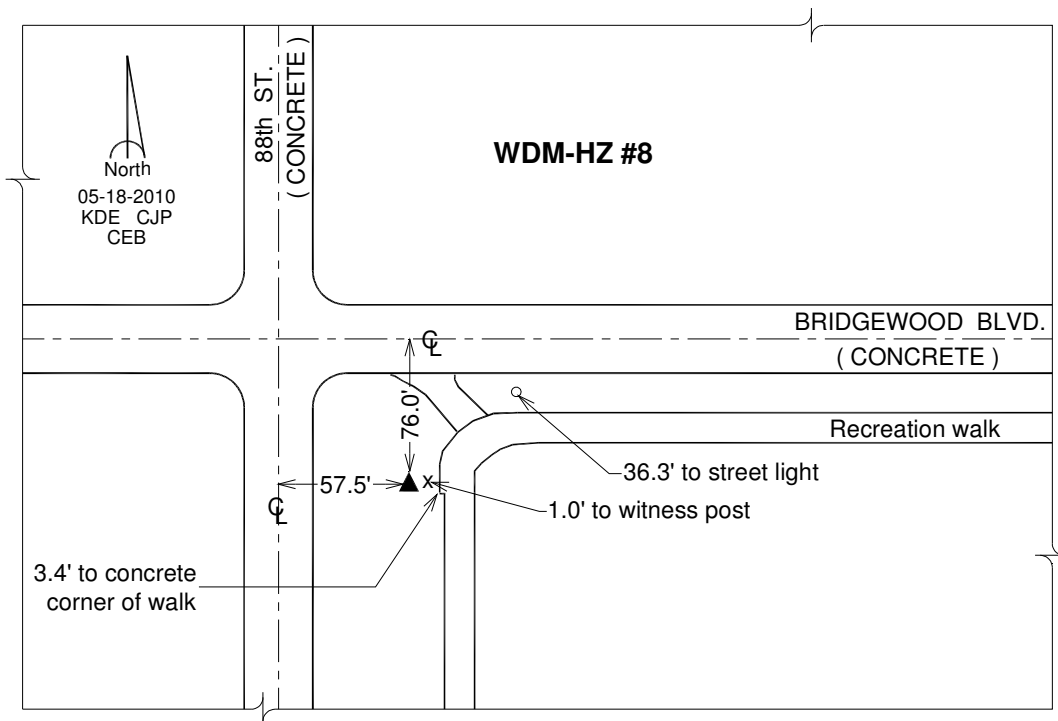
laRCS Zone 8

Northing: **7479251.254sft**

Easting: **18469489.413sft**

**Designation:** West Des Moines GPS Control Pt. - WDM-HZ #8

**Monument Type:** 3/4" x 9'-0" long Berntsen Top Security Rod monument with a 2-1/2" dia. domed survey cap and permanent magnet encased in a white PVC pipe with a NGS style alum. access cover.



*This document was prepared by DCI on June 13, 2014 for use by The City of West Des Moines, Iowa*