

2014 City of West Des Moines, Iowa
 Horizontal Datum: **NAD 83(2011)** - Vertical Datum: **NAVD 1988**
 Iowa South Zone (1402)
 Iowa Regional Coordinate System Zone 8 Ames-Des Moines
 US Survey Feet

Point Name: **WDM-HZ #11**

Network Point ID: **2011**

NAD 83(2011) Latitude: **N41°31'47.42870"** Longitude: **W93°45'39.03808"**

NAVD 88 Ortho Height: **827.800sft** Ellip. Ht: **725.739sft** **Geoid12A**

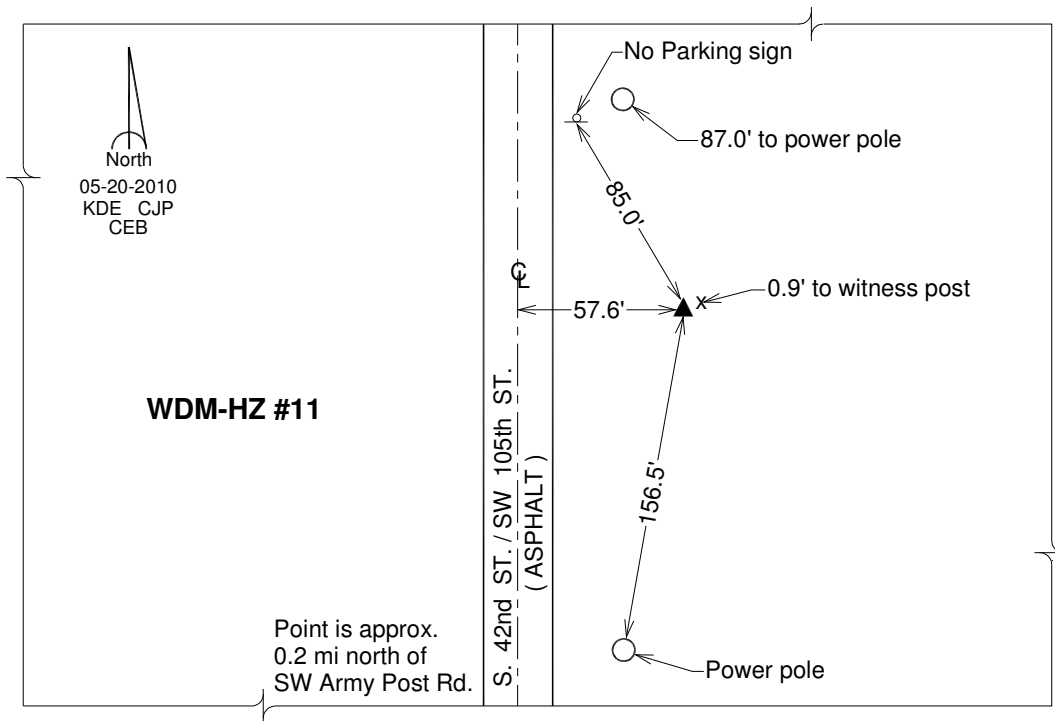
Mapping Angle: **-0°10'19"** Combination Scale Factor: **0.999930188**

Iowa South Zone (1402) Northing: **557484.694sft** Easting: **1568997.296sft**

IaRCS Zone 8 Northing: **7466318.942sft** Easting: **18487903.376sft**

Designation: West Des Moines GPS Control Pt. - WDM-HZ #11

Monument Type: 3/4" x 9'-0" long Berntsen Top Security Rod monument with a 2-1/2" dia. domed survey cap and permanent magnet encased in a white PVC pipe with a NGS style alum. access cover.



This document was prepared by DCI on June 13, 2014 for use by The City of West Des Moines, Iowa