

**2014 City of West Des Moines, Iowa**  
Horizontal Datum: **NAD 83(2011)** - Vertical Datum: **NAVD 1988**  
Iowa South Zone (1402)  
Iowa Regional Coordinate System Zone 8 Ames-Des Moines  
US Survey Feet

Point Name: **WDM-HZ #16**

Network Point ID: **2016**

NAD 83(2011)      Latitude: **N41°30'43.78742"**      Longitude: **W93°42'28.05246"**

NAVD 88 Ortho Height: **966.140sft**      Ellip. Ht: **863.739sft**      **Geoid12A**

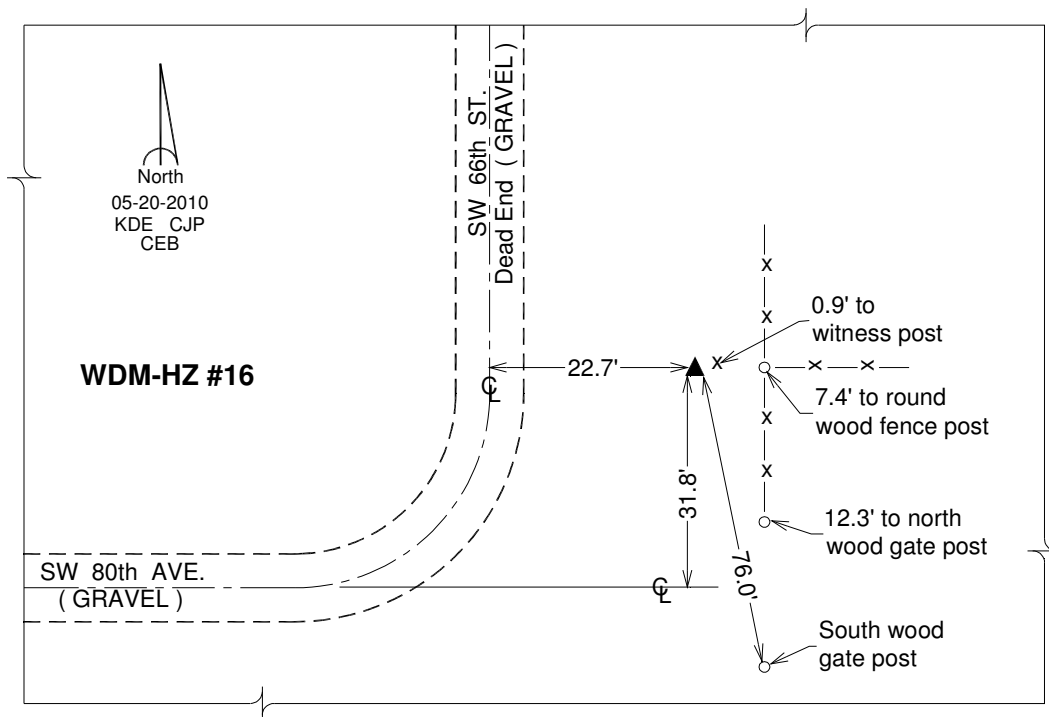
Mapping Angle: **-0°08'13"**      Combination Scale Factor: **0.999921882**

Iowa South Zone (1402)      Northing: **551004.213sft**      Easting: **1583507.457sft**

IaRCS Zone 8      Northing: **7459874.160sft**      Easting: **18502430.629sft**

**Designation:** West Des Moines GPS Control Pt. - WDM-HZ #16

**Monument Type:** 3/4" x 9'-0" long Berntsen Top Security Rod monument with a 2-1/2" dia. domed survey cap and permanent magnet encased in a white PVC pipe with a NGS style alum. access cover.



*This document was prepared by DCI on June 13, 2014 for use by The City of West Des Moines, Iowa*