

2014 City of West Des Moines, Iowa
 Horizontal Datum: **NAD 83(2011)** - Vertical Datum: **NAVD 1988**
 Iowa South Zone (1402)
 Iowa Regional Coordinate System Zone 8 Ames-Des Moines
 US Survey Feet

Point Name: **WDM-HZ #18**

Network Point ID: **2018**

NAD 83(2011) Latitude: **N41°30'16.88602"** Longitude: **W93°47'25.41551"**

NAVD 88 Ortho Height: **986.220sft** Ellip. Ht: **884.292sft** **Geoid12A**

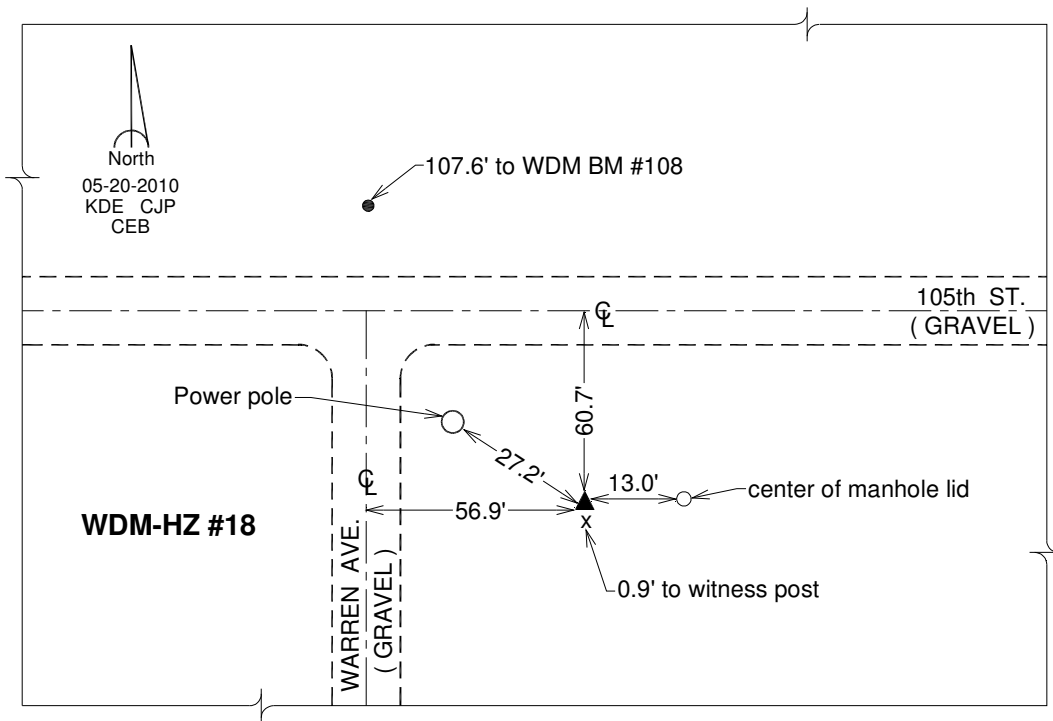
Mapping Angle: **-0°11'29"** Combination Scale Factor: **0.999920203**

Iowa South Zone (1402) Northing: **548346.232sft** Easting: **1560876.101sft**

IaRCS Zone 8 Northing: **7457159.675sft** Easting: **18479804.365sft**

Designation: West Des Moines GPS Control Pt. - WDM-HZ #18

Monument Type: 3/4" x 9'-0" long Berntsen Top Security Rod monument with a 2-1/2" dia. domed survey cap and permanent magnet encased in a white PVC pipe with a NGS style alum. access cover.



This document was prepared by DCI on June 13, 2014 for use by The City of West Des Moines, Iowa