

2014 City of West Des Moines, Iowa
Horizontal Datum: **NAD 83(2011)** - Vertical Datum: **NAVD 1988**
Iowa South Zone (1402)
Iowa Regional Coordinate System Zone 8 Ames-Des Moines
US Survey Feet

Point Name: **WDM-HZ #20**

Network Point ID: **2020**

NAD 83(2011) Latitude: **N41°29'54.70007"** Longitude: **W93°52'00.46121"**

NAVD 88 Ortho Height: **1013.730sft** Ellip. Ht: **912.229sft** **Geoid12A**

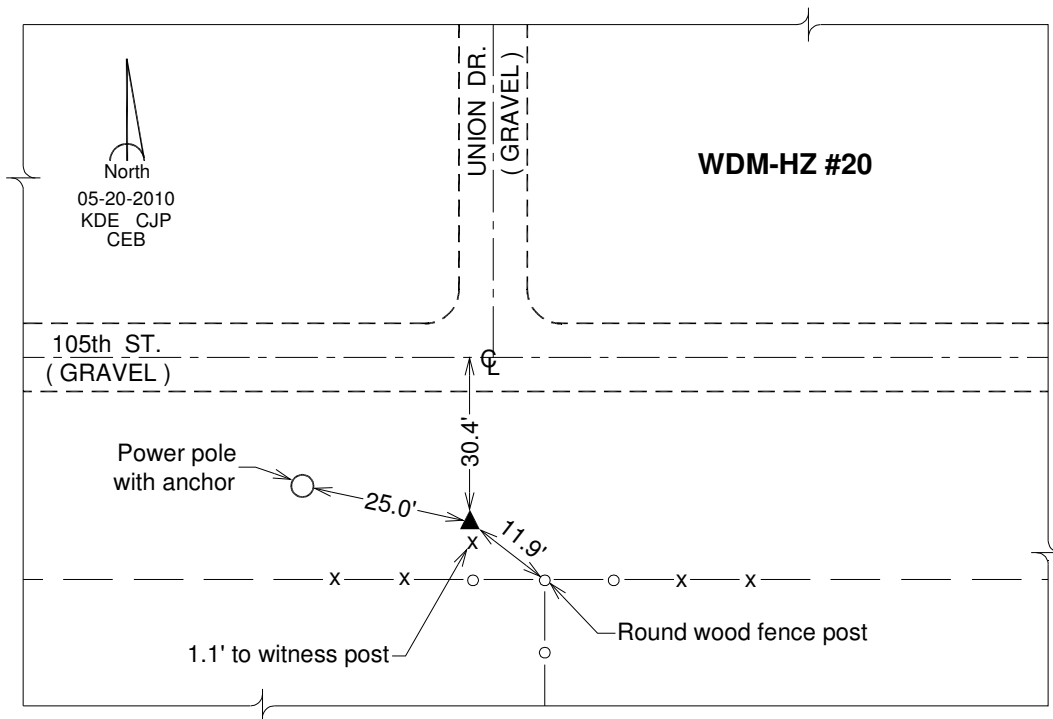
Mapping Angle: **-0°14'30"** Combination Scale Factor: **0.999918306**

Iowa South Zone (1402) Northing: **546179.795sft** Easting: **1539939.857sft**

IaRCS Zone 8 Northing: **7454941.097sft** Easting: **18458872.059sft**

Designation: West Des Moines GPS Control Pt. - WDM-HZ #20

Monument Type: 3/4" x 9'-0" long Berntsen Top Security Rod monument with a 2-1/2" dia. domed survey cap and permanent magnet encased in a white PVC pipe with a NGS style alum. access cover.



This document was prepared by DCI on June 13, 2014 for use by The City of West Des Moines, Iowa