

**2014 City of West Des Moines, Iowa**  
Horizontal Datum: **NAD 83(2011)** - Vertical Datum: **NAVD 1988**  
Iowa South Zone (1402)  
Iowa Regional Coordinate System Zone 8 Ames-Des Moines  
US Survey Feet

Point Name: **WDM-HZ #21**

Network Point ID: **2021**

NAD 83(2011)      Latitude: **N41°30'11.07149"**      Longitude: **W93°54'24.19335"**

NAVD 88 Ortho Height: **972.840sft**      Ellip. Ht: **871.615sft**      **Geoid12A**

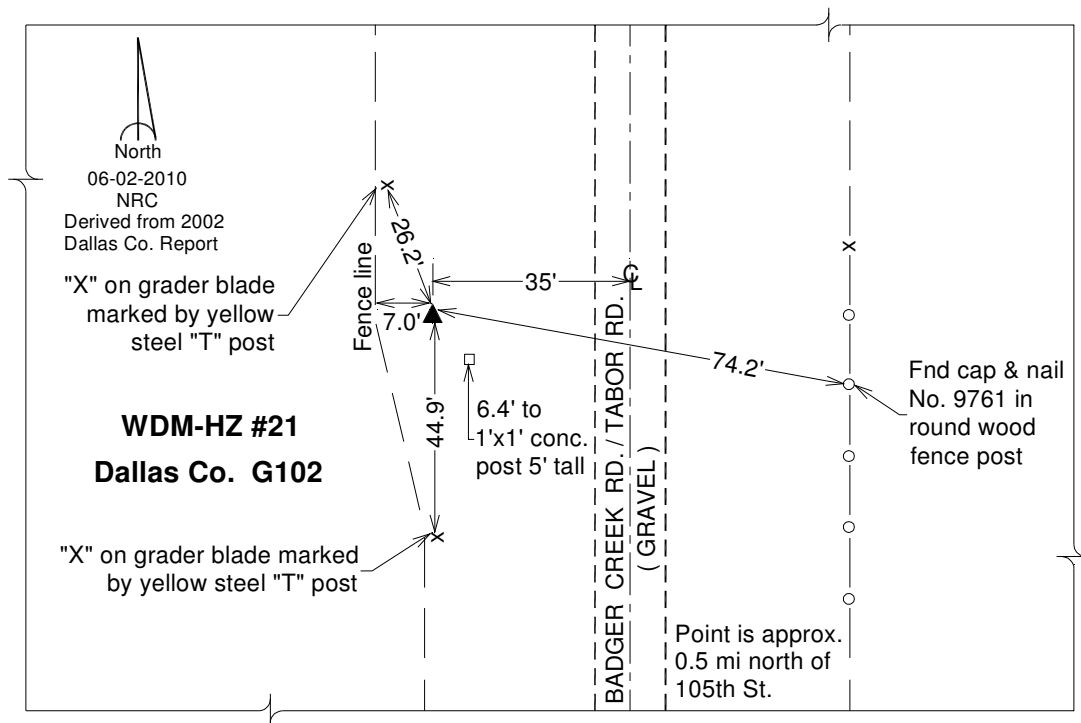
Mapping Angle: **-0°16'04"**      Combination Scale Factor: **0.999920659**

Iowa South Zone (1402)      Northing: **547885.410sft**      Easting: **1529010.785sft**

IaRCS Zone 8      Northing: **7456619.733sft**      Easting: **18447937.988sft**

**Designation:** Dallas Co. GPS Control Monument G102 (set by WHKS in 2002)

**Monument Type:** 5/8" x 6'-0" long aluminum rod with stamped cap and NGS style access cover.



*This document was prepared by DCI on June 13, 2014 for use by The City of West Des Moines, Iowa*