

**2014 City of West Des Moines, Iowa**  
Horizontal Datum: **NAD 83(2011)** - Vertical Datum: **NAVD 1988**  
Iowa South Zone (1402)  
Iowa Regional Coordinate System Zone 8 Ames-Des Moines  
US Survey Feet

Point Name: **WDM-BM-110**

Network Point ID: **110**

NAD 83(2011)      Latitude: **N41°30'43.85501"**      Longitude: **W93°43'54.33770"**

NAVD 88 Ortho Height: **969.980sft**      Ellip. Ht: **867.719sft**      **Geoid12A**

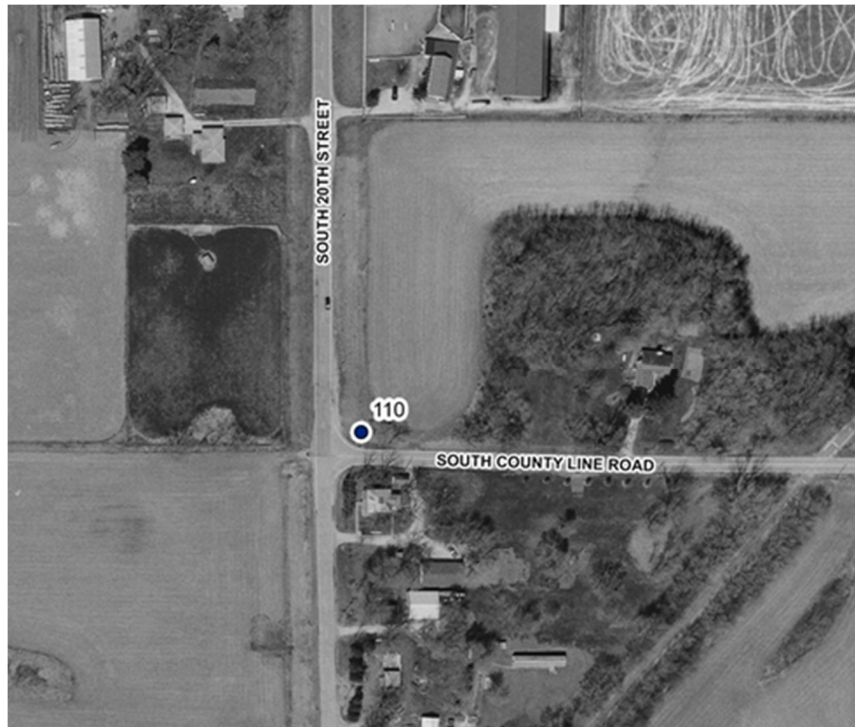
Mapping Angle: **-0°09'10"**      Combination Scale Factor: **0.999921694**

Iowa South Zone (1402)      Northing: **551027.641sft**      Easting: **1576943.211sft**

IaRCS Zone 8      Northing: **7459881.239sft**      Easting: **18495865.886sft**

**Designation:** West Des Moines Vertical Control Pt. 110 (set by others)

**Monument Type:** #5 rebar encased in a 6" dia. X 48" minimum depth concrete cylinder with a 1-1/2" dia. aluminum cap affixed to the top of the rebar.



*This document was prepared by DCI on June 13, 2014 for use by The City of West Des Moines, Iowa*