

2014 City of West Des Moines, Iowa
Horizontal Datum: **NAD 83(2011)** - Vertical Datum: **NAVD 1988**
Iowa South Zone (1402)
Iowa Regional Coordinate System Zone 8 Ames-Des Moines
US Survey Feet

Point Name: **G100**

Network Point ID: **200**

NAD 83(2011) Latitude: **N41°31'07.67891"** Longitude: **W93°47'39.96873"**

NAVD 88 Ortho Height: **927.800sft** Ellip. Ht: **825.920sft** **Geoid12A**

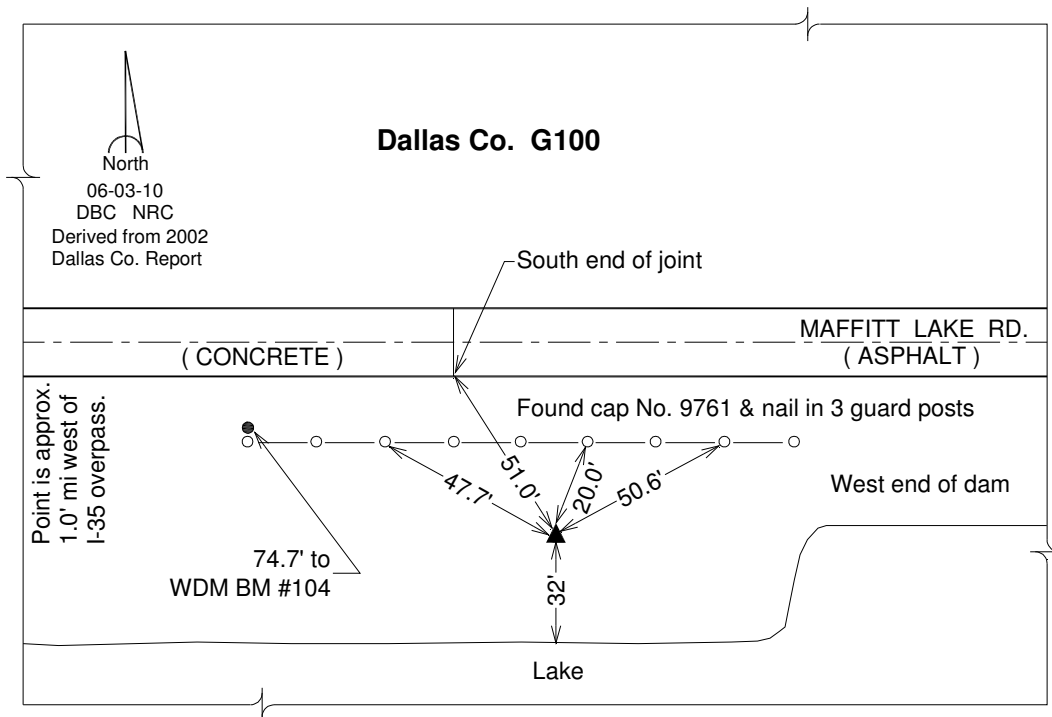
Mapping Angle: **-0°11'38"** Combination Scale Factor: **0.999924322**

Iowa South Zone (1402) Northing: **553490.848sft** Easting: **1559786.224sft**

IaRCS Zone 8 Northing: **7462301.928sft** Easting: **18478701.626sft**

Designation: Dallas Co. GPS Control Monument G100 (set by WHKS in 2002)

Monument Type: 5/8" x 6'-0" long aluminum rod with stamped cap and NGS style access cover.



This document was prepared by DCI on June 13, 2014 for use by The City of West Des Moines, Iowa