

**2014 City of West Des Moines, Iowa**  
Horizontal Datum: **NAD 83(2011)** - Vertical Datum: **NAVD 1988**  
Iowa South Zone (1402)  
Iowa Regional Coordinate System Zone 8 Ames-Des Moines  
US Survey Feet

Point Name: **B 117**

Network Point ID: **3000**

NAD 83(2011)      Latitude: **N41°32'27.61935"**      Longitude: **W93°40'40.46071"**

NAVD 88 Ortho Height: **836.100sft**      Ellip. Ht: **733.576sft**      **Geoid12A**

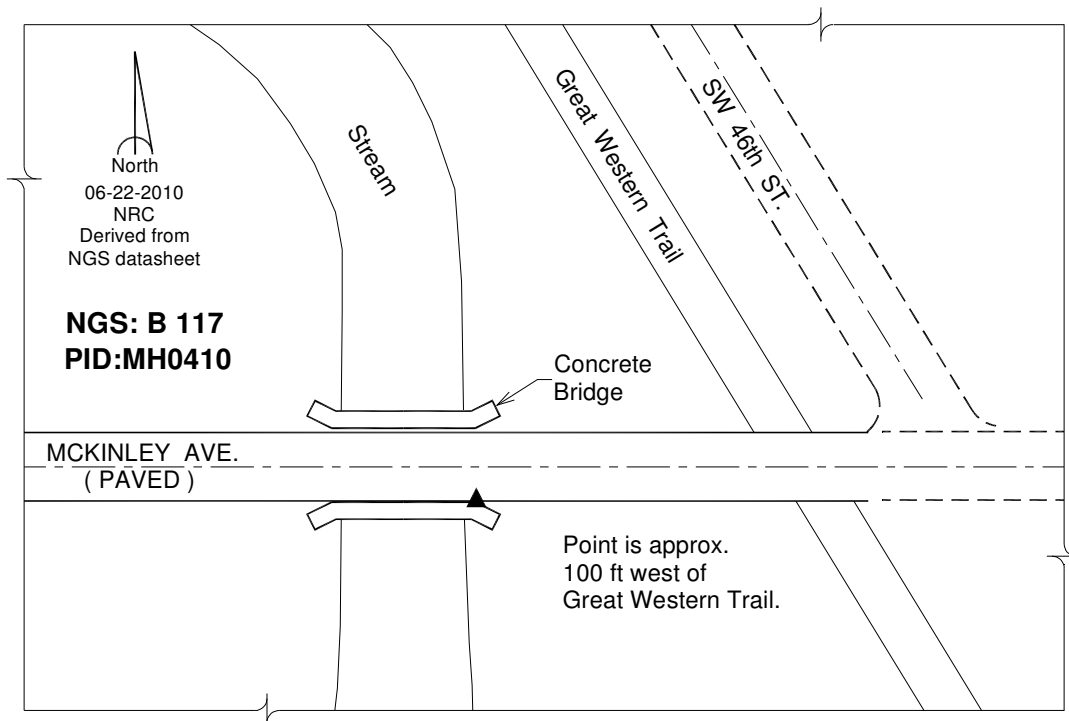
Mapping Angle: **-0°07'02"**      Combination Scale Factor: **0.999930951**

Iowa South Zone (1402)      Northing: **561495.274sft**      Easting: **1591714.143sft**

IaRCS Zone 8      Northing: **7470386.366sft**      Easting: **18510611.699sft**

**Designation:** NGS Vertical control station "B 117" PID: MH0410

**Monument Type:** A standard bench mark disk stamped "B 117" and set on the northeast end of the southeast headwall of a road bridge.



*This document was prepared by DCI on June 13, 2014 for use by The City of West Des Moines, Iowa*