

**2014 City of West Des Moines, Iowa**  
Horizontal Datum: **NAD 83(2011)** - Vertical Datum: **NAVD 1988**  
Iowa South Zone (1402)  
Iowa Regional Coordinate System Zone 8 Ames-Des Moines  
US Survey Feet

Point Name: **GPS 9**

Network Point ID: **3002**

NAD 83(2011)      Latitude: **N41°31'09.30624"**

Longitude: **W93°46'41.06874"**

NAVD 88 Ortho Height: **938.993sft**

Ellip. Ht: **837.017sft**

**Geoid12A**

Mapping Angle: **-0°10'59"**

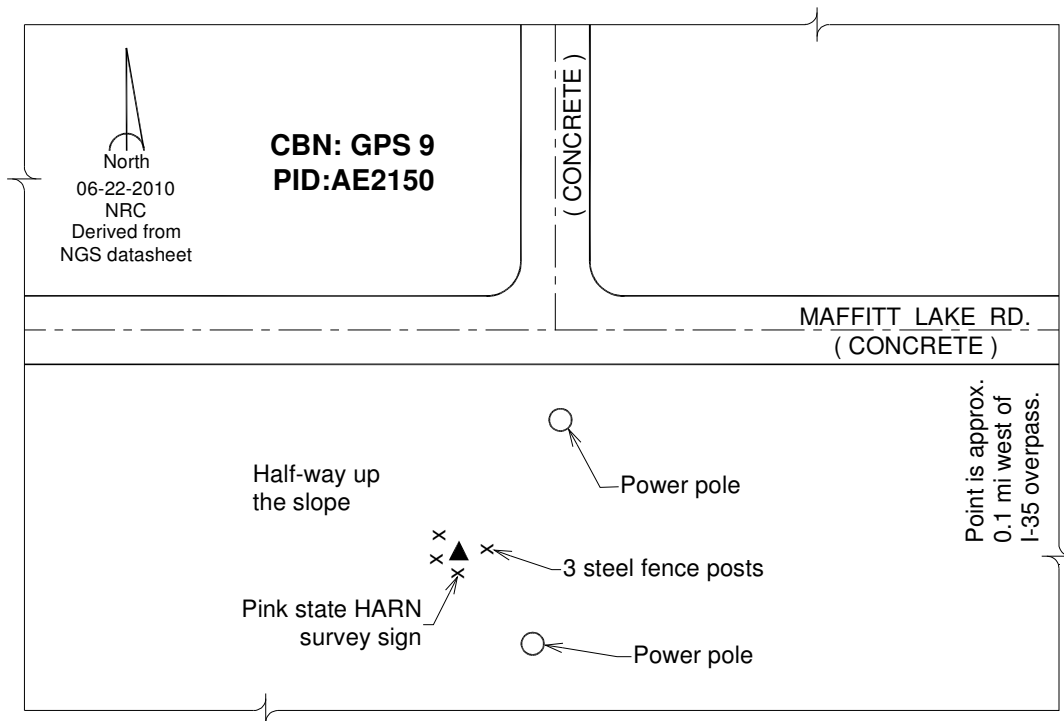
Combination Scale Factor: **0.999923836**

Iowa South Zone (1402)    Northing: **553640.810sft**    Easting: **1564267.180sft**

IaRCS Zone 8      Northing: **7462463.041sft**    Easting: **18483182.508sft**

**Designation:** CBN Horizontal control station "GPS 9"    PID: AE2150

**Monument Type:** A horizontal control disk stamped "GPS 9" and set in the top of a concrete monument. (Point is the center of the letter P in GPS)



*This document was prepared by DCI on June 13, 2014 for use by The City of West Des Moines, Iowa*