

**2014 City of West Des Moines, Iowa**  
Horizontal Datum: **NAD 83(2011)** - Vertical Datum: **NAVD 1988**  
Iowa South Zone (1402)  
Iowa Regional Coordinate System Zone 8 Ames-Des Moines  
US Survey Feet

Point Name: **A 162**

Network Point ID: **3003**

NAD 83(2011)      Latitude: **N41°29'22.49246"**      Longitude: **W94°06'39.76436"**

NAVD 88 Ortho Height: **1095.820sft**      Ellip. Ht: **996.291sft**      **Geoid12A**

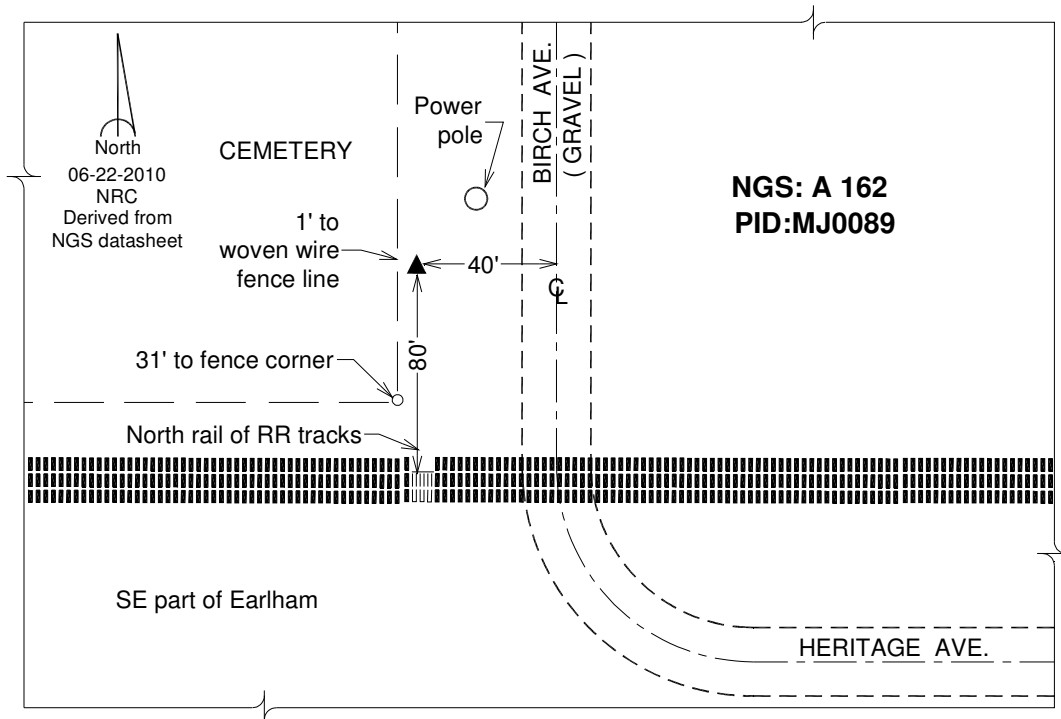
Mapping Angle: **-0°24'09"**      Combination Scale Factor: **0.999913498**

Iowa South Zone (1402)      Northing: **543296.130sft**      Easting: **1473009.720sft**

IaRCS Zone 8      Northing: **7451891.705sft**      Easting: **18391944.013sft**

**Designation:** NGS Horiz. and 1st order vert. control station "A 162" PID: MJ0089

**Monument Type:** A standard CGS bench mark disk stamped "A 162 1950" and set in the top of a concrete monument.



*This document was prepared by DCI on June 13, 2014 for use by The City of West Des Moines, Iowa*