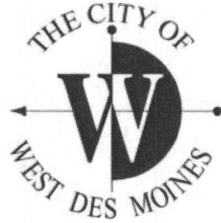



**VERTICAL CONTROL
FOR THE
CITY OF WEST DES MOINES, IOWA
August, 2016**



Prepared by:

Engineering Services

I HEREBY CERTIFY THAT THIS REPORT WAS MADE BY ME OR UNDER MY DIRECT PERSONAL SUPERVISION AND I AM A DULY REGISTERED LAND SURVEYOR UNDER THE LAWS OF THE STATE OF IOWA.


Duane C. Wittstock, P.E., L.S.
Iowa Registration No. 9678
Registration Expires December 31, 2016

9-12-16
Date

WEST DES MOINES STANDARD BENCHMARK

West Des Moines Standard Benchmarks are constructed of #5 rebar encased in a concrete cylinder six inches (6") in diameter x forty-eight inches (48") inches minimum depth. Affixed to the top of the rebar is an aluminum cap one and one-half inches (1 ½") in diameter with the Benchmark number and other identification as shown on the attached drawing.

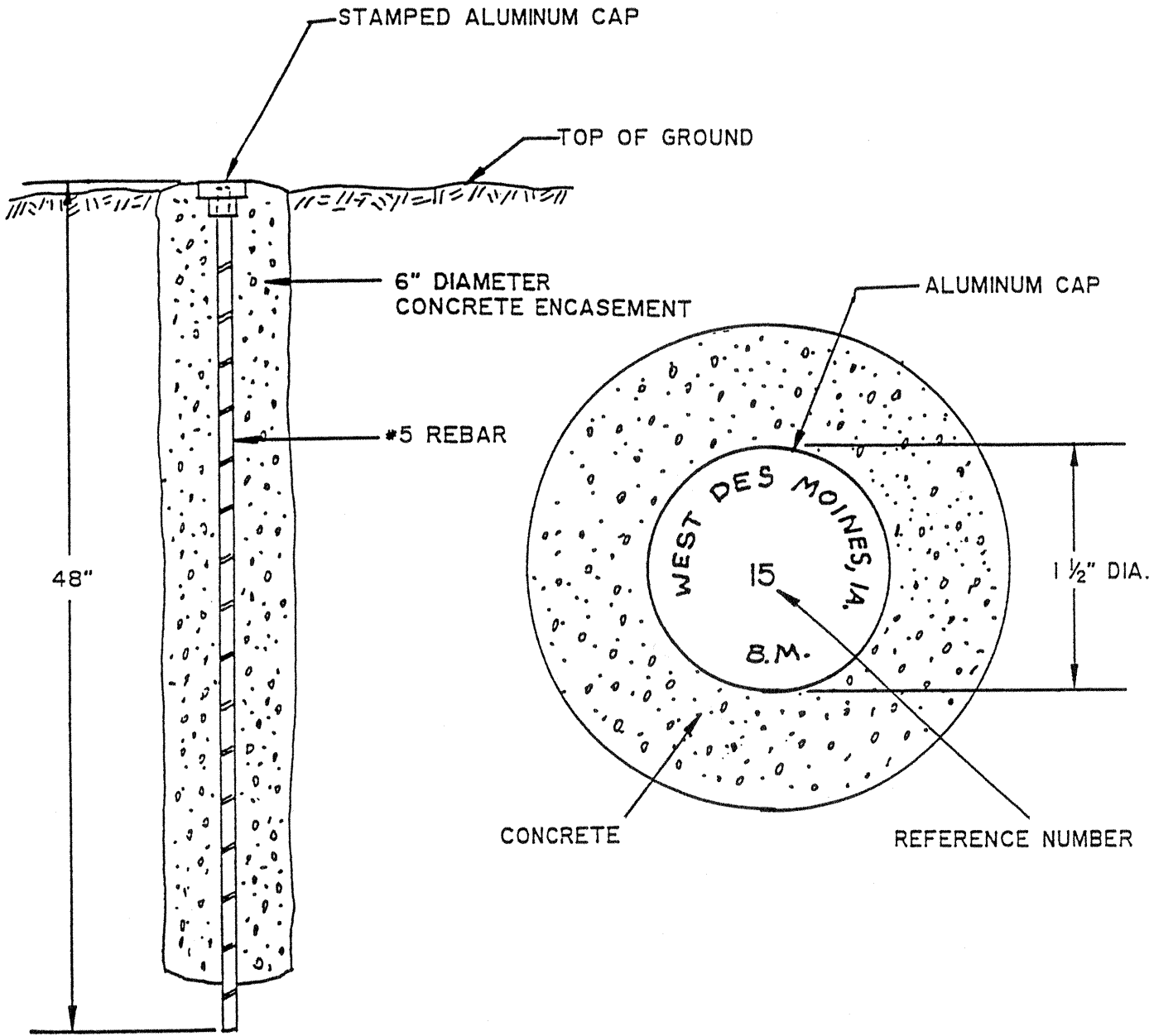
Vertical Control was established to third-order accuracy utilizing existing National Geodetic survey monuments tied to the North American Vertical Datum of 1988 (NAVD88).

To convert from NAVD88 datum to West Des Moines datum subtract 774.01 feet. The conversion from the National Geodetic Survey Datum of 1929 (NGVD29) to the West Des Moines datum was to subtract 773.84 feet from the NGVD29 elevations.

The current condition of these benchmarks is not warranted. The user is recommended to carefully scrutinize the condition of the benchmarks prior to utilization. It is recommended the user always check between two separate benchmarks when performing vertical control work.

The Engineering Division of the Department of Public Works would appreciate being contacted if any damage is noted to any of these benchmarks.

City of West Des Moines
Engineering Division
560 S. 16th Street
West Des Moines, Iowa 50265
Phone # (515) 222-3480
Fax # (515) 222-3478






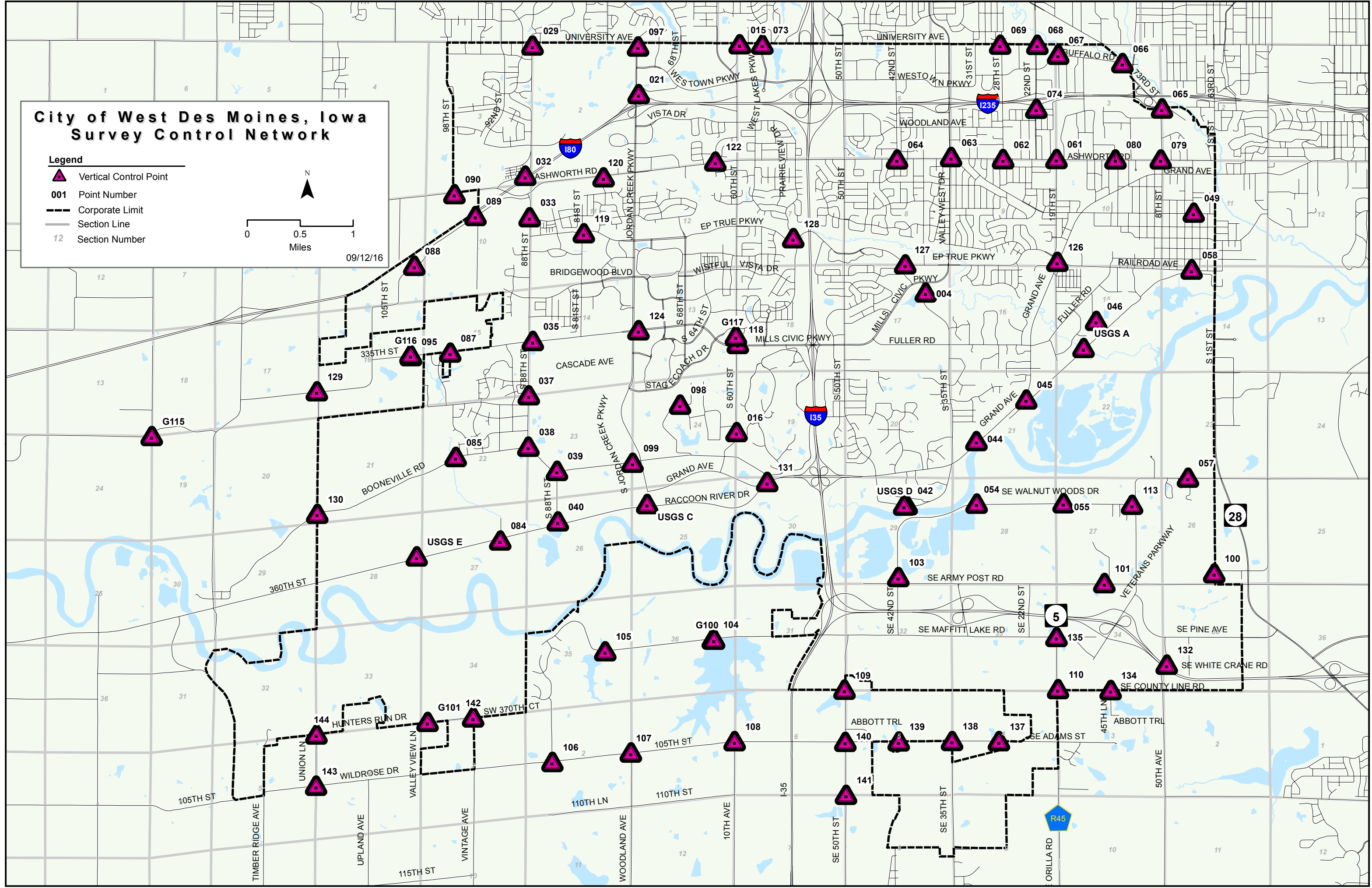
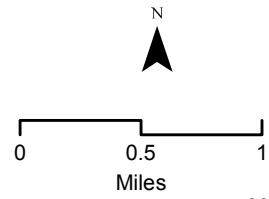
STANDARD BENCHMARK
 ENGINEERING DIVISION
 CITY OF WEST DES MOINES

JUNE 1989
 D.L.B.

City of West Des Moines, Iowa Survey Control Network

Legend

-  Vertical Control Point
- 001** Point Number
-  Corporate Limit
-  Section Line
- 12** Section Number





City of West Des Moines, Iowa Vertical Control Network

Benchmark: **USGS A**

NAVD88 - FEET 818.86
WDM DATUM - FEET 44.85
NAVD88 - METERS 249.589
SECTION 15
TOWNSHIP T78N
RANGE R25W
COUNTY Polk

LOCATION

Iowa Interstate Railroad, NW end of SW abutment of bridge number 3639, over Jordan Creek, 5.8 feet NW of NW rail, 1 foot below top of rail.

DESCRIPTION

Standard USC & GS disk stamped "N 155 1950", NAVD88 benchmark

NOTE





City of West Des Moines, Iowa Vertical Control Network

Benchmark: **USGS C**

NAVD88 - FEET 835.07
WDM DATUM - FEET 61.06
NAVD88 - METERS 254.530
SECTION 25
TOWNSHIP T78N
RANGE R26W
COUNTY Dallas

LOCATION

1.3 miles West of S. 60th Street along Iowa Interstate Railroad, immediately North of Raccoon River Drive, top of West end of North headwall of concrete culvert.

DESCRIPTION

Standard USC & GS disk stamped "ELEV 834.903"

NOTE





City of West Des Moines, Iowa Vertical Control Network

Benchmark: **USGS D**

NAVD88 - FEET	839.08
WDM DATUM - FEET	65.07
NAVD88 - METERS	255.752
SECTION	29
TOWNSHIP	T78N
RANGE	R25W
COUNTY	Polk

LOCATION

In Commerce, 38.5 feet North of North rail of Iowa Interstate Railroad, 72 feet West of centerline of road leading to former bridge, 25 feet South of Center line of Commerce Drive, set in top of concrete post flush with ground.

DESCRIPTION

Standard USC & GS disk stamped "Q 115 1950"

NOTE





City of West Des Moines, Iowa Vertical Control Network

Benchmark: **USGS E**

NAVD88 - FEET 845.50
WDM DATUM - FEET 71.49
NAVD88 - METERS 257.709
SECTION 28
TOWNSHIP T78N
RANGE R26W
COUNTY Dallas

LOCATION

U.S.G.S. Tablet #845 - Southwest concrete headwall of railroad bridge #370.9 over creek on the North side of Raccoon River Drive, 300+/- West of East line of Section 28, Township 78 North, Range 26 West.

DESCRIPTION

Stamped elevation 845.208 feet;

NOTE

