

Dallas County, Iowa

Horizontal Datum: **NAD 83(NA2011)** - Vertical Datum: **NAVD 1988**
Iowa State Plane South Zone (1402)
Iowa Regional Coordinate System, Zone 8, Ames-Des Moines TM
US Survey Feet
2018

Point Name: **100**

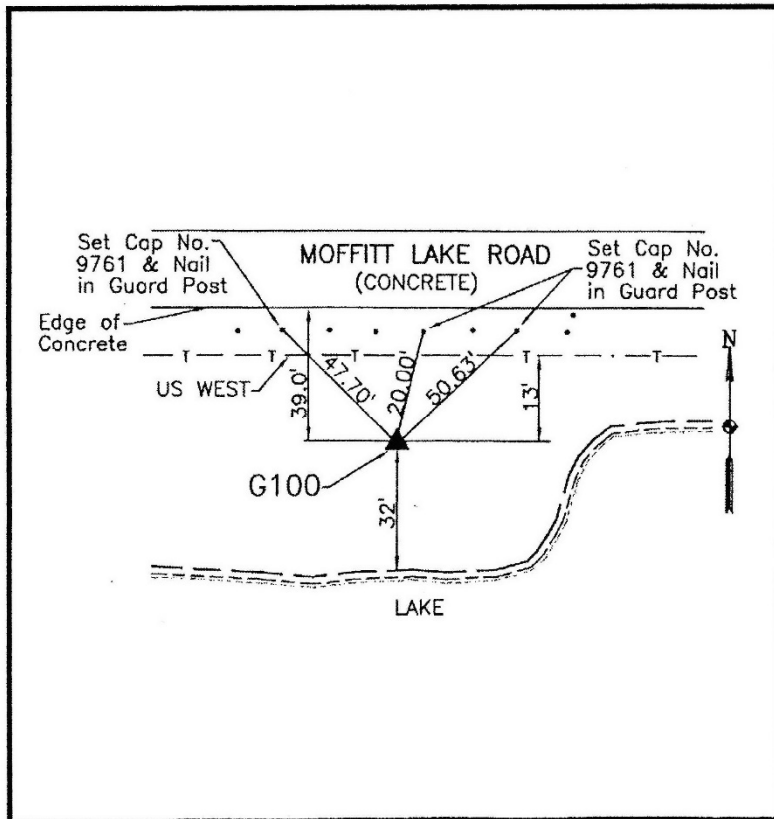
Designation: G100 (set by WHKS in 2001)

NAD 83(NA2011) Latitude: **N41°31'07.67891"** Longitude: **W93°47'39.96853"**
NAVD 88 Ortho Height: **927.800sft** Ellip. Ht: **825.920sft** **Geoid12B**

Iowa South Zone (1402) Northing: **553490.848sft** Easting: **1559786.224sft**
Mapping Angle: **-0°11'38"** Combination Scale Factor: **0.99992432**

IaRCS Zone 8 Northing: **7462301.929sft** Easting: **18478701.627sft**
Mapping Angle: **-0°03'06"** Combination Scale Factor: **0.99999411**

Monument Type: 5/8" dia. x 6'-0" long alum. rod with cap and NGS style access cover.



Description:

Placed 5/8" X 6' - 0" Long Aluminum Rod with Cap Stamped G100 and NGS Style Access Cover 3 " Deep.

Location:

South side Maffitt Lake Road at west end of dam. East of house at 12497 Maffitt Lake Road address. T-78N R-26W, E1/4 Cor. Sec 36.