

Dallas County, Iowa

Horizontal Datum: **NAD 83(NA2011)** - Vertical Datum: **NAVD 1988**
Iowa State Plane South Zone (1402)
Iowa Regional Coordinate System, Zone 8, Ames-Des Moines TM
US Survey Feet
2018

Point Name: **102**

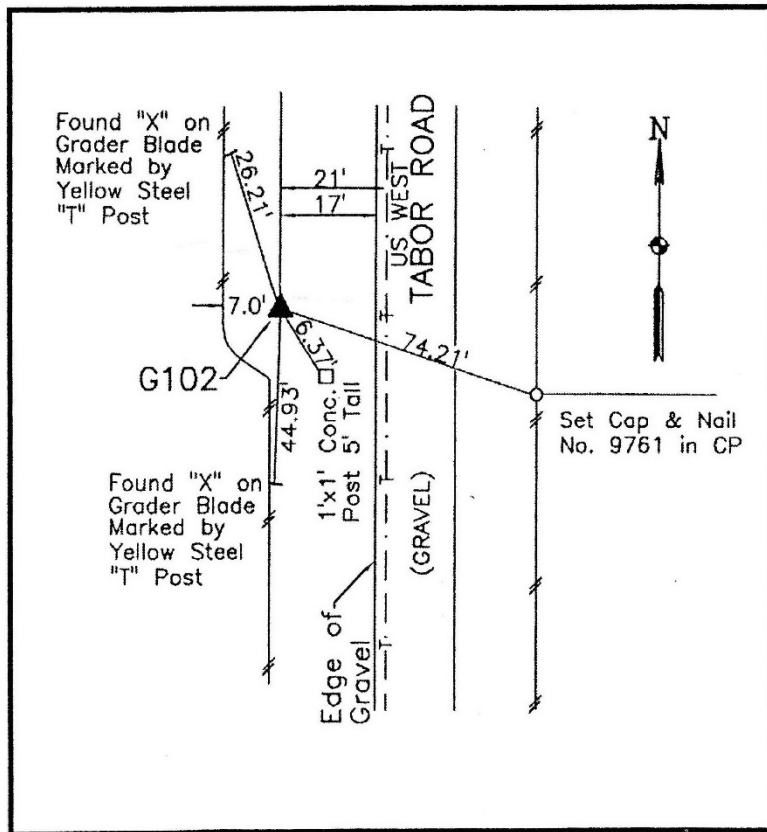
Designation: G102 (set by WHKS in 2001)

NAD 83(NA2011) Latitude: **N41°30'11.07149"** Longitude: **W93°54'24.19335"**
NAVD 88 Ortho Height: **972.840sft** Ellip. Ht: **871.615sft** **Geoid12B**

Iowa South Zone (1402) Northing: **547885.410sft** Easting: **1529010.785sft**
Mapping Angle: **-0°16'04"** Combination Scale Factor: **0.99992066**

IaRCS Zone 8 Northing: **7456619.733sft** Easting: **18447937.988sft**
Mapping Angle: **-0°07'33"** Combination Scale Factor: **0.99999451**

Monument Type: 5/8" dia. x 6'-0" long alum. rod with cap and NGS style access cover.



Description:

Placed 5/8" X 6' - 0" Long Aluminum Rod with Cap Stamped G102 and NGS Style Access Cover 3" Deep.

Location:

West side Tabor Road at south county line near old concrete corner post. South of address 3696 Tabor Road. T-78N R-27W, S1/4 Cor. Sec. 36.