

Dallas County, Iowa

Horizontal Datum: **NAD 83(NA2011)** - Vertical Datum: **NAVD 1988**
Iowa State Plane South Zone (1402)
Iowa Regional Coordinate System, Zone 8, Ames-Des Moines TM
US Survey Feet
2018

Point Name: **103**

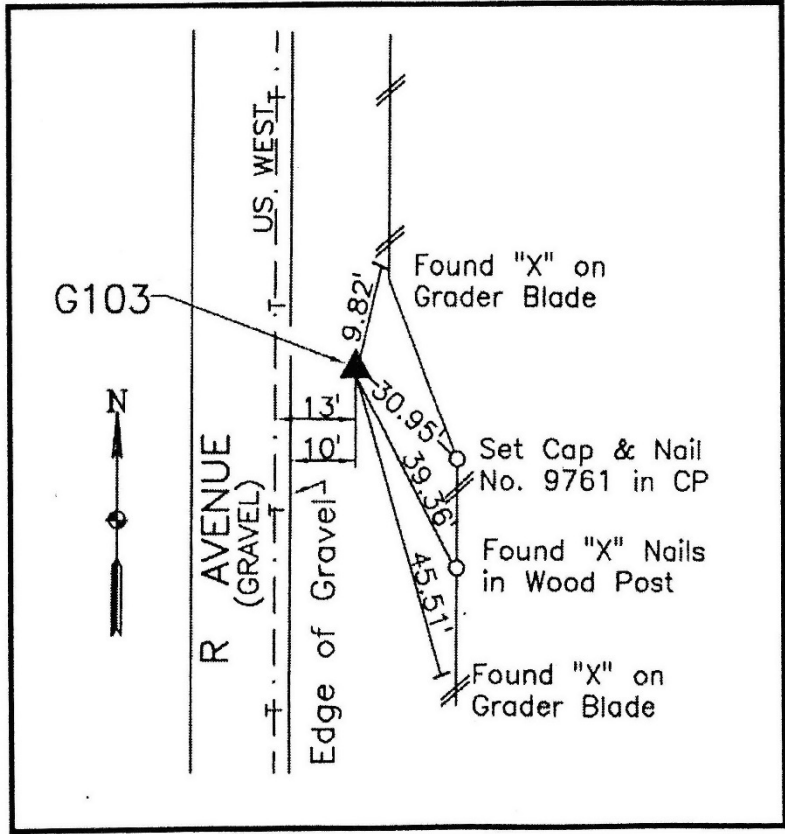
Designation: G103 (set by WHKS in 2001)

NAD 83(NA2011) Latitude: **N41°30'11.84553"** Longitude: **W93°57'16.80517"**
NAVD 88 Ortho Height: **1015.408sft** Ellip. Ht: **914.543sft** **Geoid12B**

Iowa South Zone (1402) Northing: **548028.782sft** Easting: **1515877.816sft**
Mapping Angle: **-0°17'58"** Combination Scale Factor: **0.99991863**

IaRCS Zone 8 Northing: **7456730.595sft** Easting: **18434803.723sft**
Mapping Angle: **-0°09'28"** Combination Scale Factor: **0.99999422**

Monument Type: 5/8" dia. x 6'-0" long alum. rod with cap and NGS style access cover.



Description:

Placed 5/8" X 6' - 0" Long Aluminum Rod with Cap Stamped G103 and NGS Style Access Cover 5" Deep.

Location:

East side R Avenue at south county line. T-78N R-27W, SW1/4 Cor. Sec. 34.