

**Dallas County, Iowa**

Horizontal Datum: **NAD 83(NA2011)** - Vertical Datum: **NAVD 1988**  
Iowa State Plane South Zone (1402)  
Iowa Regional Coordinate System, Zone 8, Ames-Des Moines TM  
US Survey Feet  
**2018**

Point Name: **104**

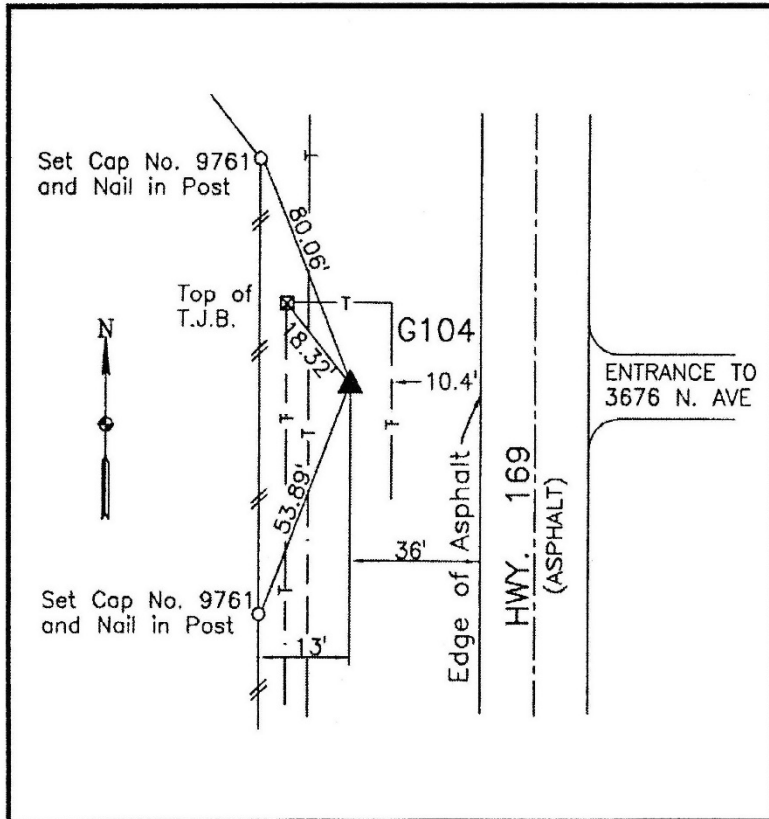
**Designation:** G104 (set by WHKS in 2001)

NAD 83(NA2011) Latitude: **N41°30'13.97077"** Longitude: **W94°00'46.51792"**  
NAVD 88 Ortho Height: **915.493sft** Ellip. Ht: **815.117sft** **Geoid12B**

**Iowa South Zone (1402)** Northing: **548332.629sft** Easting: **1499922.940sft**  
Mapping Angle: **-0°20'16"** Combination Scale Factor: **0.99992343**

**IaRCS Zone 8** Northing: **7456995.014sft** Easting: **18418846.919sft**  
Mapping Angle: **-0°11'47"** Combination Scale Factor: **1.00000163**

**Monument Type:** 5/8" dia. x 6'-0" long alum. rod with cap and NGS style access cover.



Description:

Placed 5/8" X 6' - 0" Long Aluminum Rod with Cap Stamped G104 and NGS Style Access Cover 4" Deep.

Location:

West side N Avenue (Hwy 169) opposite driveway to address 3676 N Avenue. Just north of south county line. Station 2+70± Hwy. 169. T-78N R-27W, SW1/4 Cor. Sec. 31.