

Dallas County, Iowa

Horizontal Datum: **NAD 83(NA2011)** - Vertical Datum: **NAVD 1988**
Iowa State Plane South Zone (1402)
Iowa Regional Coordinate System, Zone 8, Ames-Des Moines TM
US Survey Feet
2018

Point Name: **106**

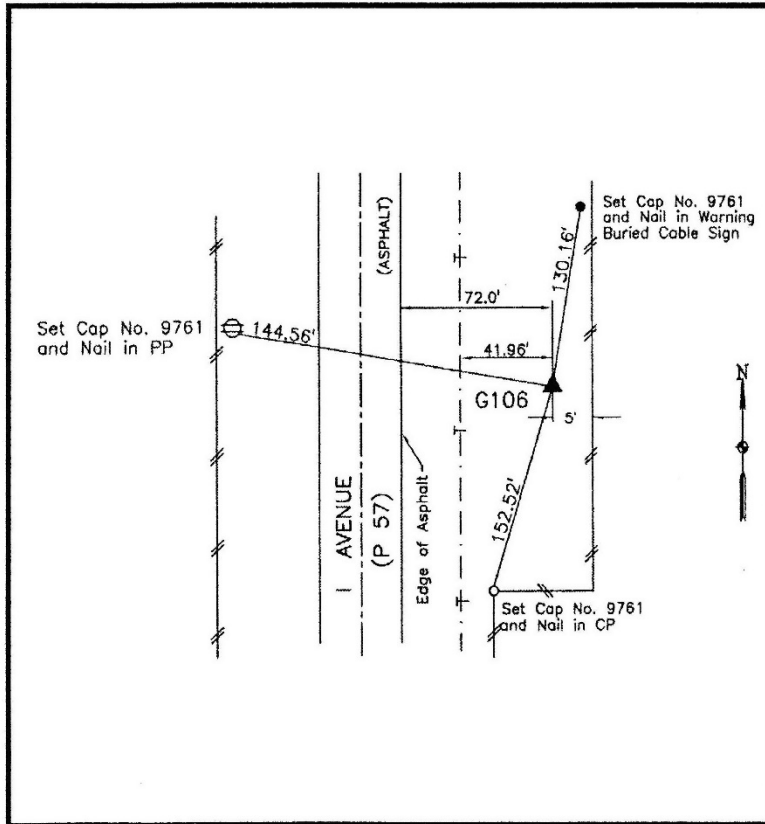
Designation: G106 (set by WHKS in 2001)

NAD 83(NA2011) Latitude: **N41°30'15.86265"** Longitude: **W94°07'23.20894"**
NAVD 88 Ortho Height: **1089.397sft** Ellip. Ht: **990.150sft** **Geoid12B**

Iowa South Zone (1402) Northing: **548721.205sft** Easting: **1469742.243sft**
Mapping Angle: **-0°24'38"** Combination Scale Factor: **0.99991513**

IaRCS Zone 8 Northing: **7457309.174sft** Easting: **18388662.900sft**
Mapping Angle: **-0°16'10"** Combination Scale Factor: **0.99999992**

Monument Type: 5/8" dia. x 6'-0" long alum. rod with cap and NGS style access cover.



Description:

Placed 5/8" X 6' - 0" Long Aluminum Rod with Cap Stamped G106 and NGS Style Access Cover 3" Deep.

Location:

East side I Ave (P57) at east of right of way fence and north of old building site at south county line. T-78N R-28W, SW Cor. SW1/4 SE1/4 Sec. 31.