

Dallas County, Iowa

Horizontal Datum: **NAD 83(NA2011)** - Vertical Datum: **NAVD 1988**
Iowa State Plane South Zone (1402)
Iowa Regional Coordinate System, Zone 8, Ames-Des Moines TM
US Survey Feet
2018

Point Name: **107**

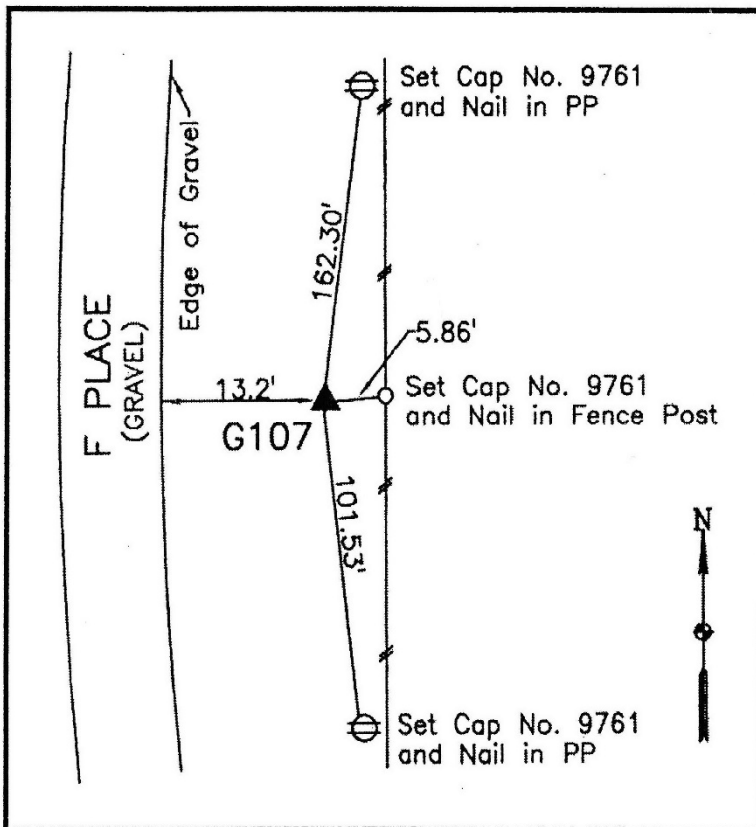
Designation: G107 (set by WHKS in 2001)

NAD 83(NA2011) Latitude: **N41°30'13.38297"** Longitude: **W94°11'05.65245"**
NAVD 88 Ortho Height: **1108.238sft** Ellip. Ht: **1009.779sft** **Geoid12B**

Iowa South Zone (1402) Northing: **548597.489sft** Easting: **1452815.999sft**
Mapping Angle: **-0°27'04"** Combination Scale Factor: **0.99991413**

IaRCS Zone 8 Northing: **7457143.796sft** Easting: **18371735.538sft**
Mapping Angle: **-0°18'37"** Combination Scale Factor: **1.00000362**

Monument Type: 5/8" dia. x 6'-0" long alum. rod with cap and NGS style access cover.



Description:

Placed 5/8" X 6' - 0" Long
Aluminum Rod with Cap
Stamped G107 and NGS Style
Access Cover 3 " Deep.

Location:

East side of F Place just north
of south county line. T-78N R-
29W, SW Cor. Sec. 34.

This document was prepared by Dan Corbin, Inc. on March 9, 2018 for Dallas County, Iowa.