

Dallas County, Iowa

Horizontal Datum: **NAD 83(NA2011)** - Vertical Datum: **NAVD 1988**
Iowa State Plane South Zone (1402)
Iowa Regional Coordinate System, Zone 8, Ames-Des Moines TM
US Survey Feet
2018

Point Name: **108**

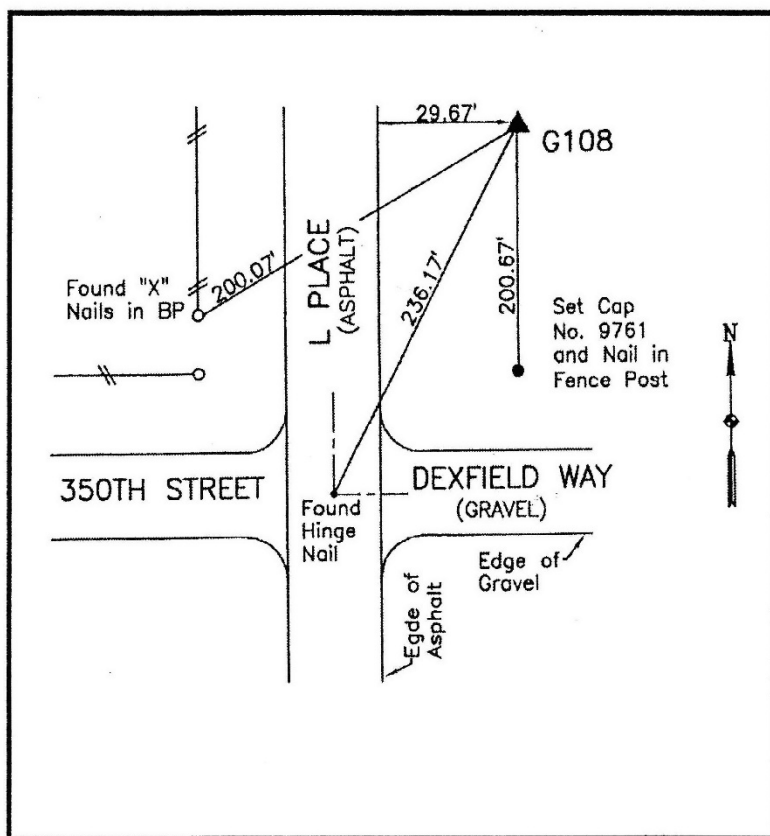
Designation: G108 (set by WHKS in 2001)

NAD 83(NA2011) Latitude: **N41°30'15.58760"** Longitude: **W94°14'29.16869"**
NAVD 88 Ortho Height: **1152.200sft** Ellip. Ht: **1054.628sft** **Geoid12B**

Iowa South Zone (1402) Northing: **548947.577sft** Easting: **1437333.605sft**
Mapping Angle: **-0°29'18"** Combination Scale Factor: **0.99991204**

IaRCS Zone 8 Northing: **7457455.880sft** Easting: **18356250.909sft**
Mapping Angle: **-0°20'52"** Combination Scale Factor: **1.00000629**

Monument Type: 5/8" dia. x 6'-0" long alum. rod with cap and NGS style access cover.



Description:

Placed 5/8" X 6' - 0" Long
Aluminum Rod with Cap
Stamped G108 and NGS Style
Access Cover 2 " Deep.

Location:

East side of C Place (P48)
north of south county line
(Deerfield Way). T-78N R-
29W, SW Cor. Sec. 31.