

**Dallas County, Iowa**

Horizontal Datum: **NAD 83(NA2011)** - Vertical Datum: **NAVD 1988**  
Iowa State Plane South Zone (1402)  
Iowa Regional Coordinate System, Zone 8, Ames-Des Moines TM  
US Survey Feet  
**2018**

Point Name: **109**

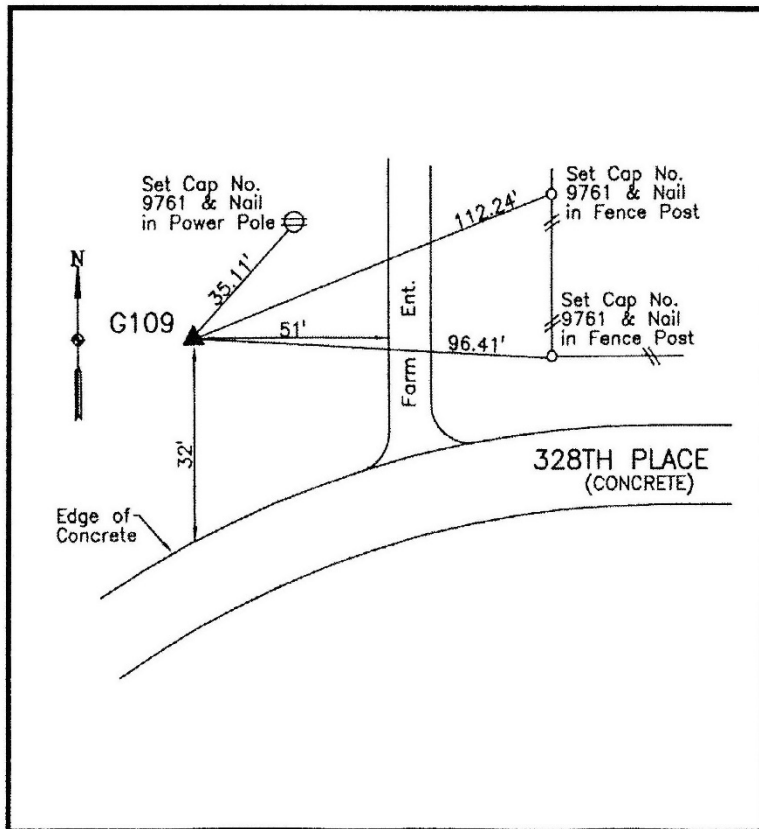
**Designation:** G109 (set by WHKS in 2001)

NAD 83(NA2011) Latitude: **N41°33'50.93571"** Longitude: **W94°14'32.26939"**  
NAVD 88 Ortho Height: **947.558sft** Ellip. Ht: **851.010sft** **Geoid12B**

**Iowa South Zone (1402)** Northing: **570745.054sft** Easting: **1437283.697sft**  
Mapping Angle: **-0°29'20"** Combination Scale Factor: **0.99992782**

**IaRCS Zone 8** Northing: **7479255.161sft** Easting: **18356147.571sft**  
Mapping Angle: **-0°20'55"** Combination Scale Factor: **1.00001604**

**Monument Type:** 5/8" dia. x 6'-0" long alum. rod with cap and NGS style access cover.



Description:

Placed 5/8" X 6' - 0" Long  
Aluminum Rod with Cap  
Stamped G109 and NGS Style  
Access Cover 4 " Deep.

Location:

North side 328th Place (F61)  
east of west county line and  
west of farm entrance. West of  
DNR Courtney McCammond  
Access Park. T-78N R-29W,  
SW Cor. Sec. 7.