

Dallas County, Iowa

Horizontal Datum: **NAD 83(NA2011)** - Vertical Datum: **NAVD 1988**
Iowa State Plane South Zone (1402)
Iowa Regional Coordinate System, Zone 8, Ames-Des Moines TM
US Survey Feet
2018

Point Name: **110**

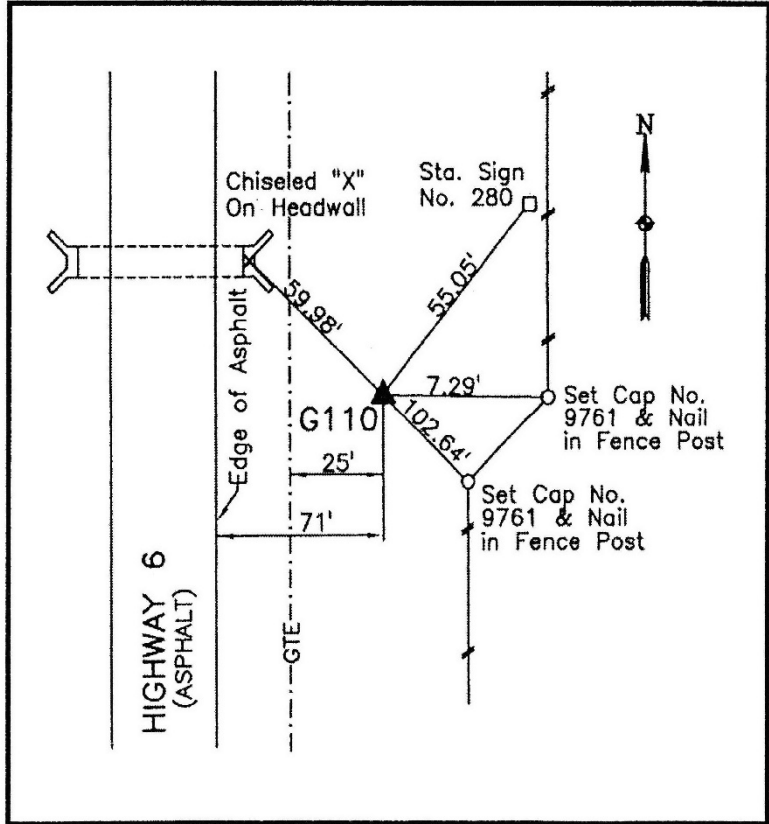
Designation: G110 (set by WHKS in 2001)

NAD 83(NA2011) Latitude: **N41°33'32.83543"** Longitude: **W94°11'22.19399"**
NAVD 88 Ortho Height: **1079.300sft** Ellip. Ht: **981.733sft** **Geoid12B**

Iowa South Zone (1402) Northing: **568794.177sft** Easting: **1451717.472sft**
Mapping Angle: **-0°27'15"** Combination Scale Factor: **0.99992104**

IaRCS Zone 8 Northing: **7477339.482sft** Easting: **18370587.326sft**
Mapping Angle: **-0°18'49"** Combination Scale Factor: **1.00000529**

Monument Type: 5/8" dia. x 6'-0" long alum. rod with cap and NGS style access cover.



Description:

Placed 5/8" X 6' - 0" Long
Aluminum Rod with Cap
Stamped G110 and NGS Style
Access Cover 3" Deep.

Location:

East side Hwy. 6 at east right
of way fence nearly opposite
driveway to address 3315 Hwy
6. Station 279+40 Hwy. 6.