

Dallas County, Iowa
Horizontal Datum: **NAD 83(NA2011)** - Vertical Datum: **NAVD 1988**
Iowa State Plane South Zone (1402)
Iowa Regional Coordinate System, Zone 8, Ames-Des Moines TM
US Survey Feet
2018

Point Name: **111**

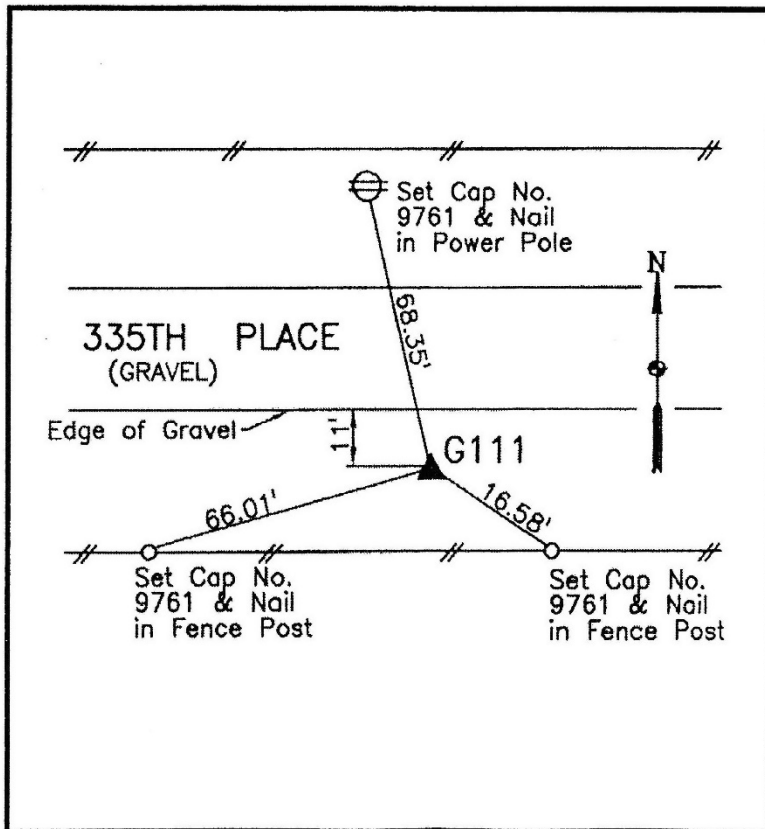
Designation: G111 (set by WHKS in 2001)

NAD 83(NA2011) Latitude: **N41°33'13.33383"** Longitude: **W94°08'03.40169"**
NAVD 88 Ortho Height: **1078.236sft** Ellip. Ht: **979.719sft** **Geoid12B**

Iowa South Zone (1402) Northing: **566705.385sft** Easting: **1466815.215sft**
Mapping Angle: **-0°25'04"** Combination Scale Factor: **0.99992055**

IaRCS Zone 8 Northing: **7475287.587sft** Easting: **18385691.395sft**
Mapping Angle: **-0°16'37"** Combination Scale Factor: **1.00000118**

Monument Type: 5/8" dia. x 6'-0" long alum. rod with cap and NGS style access cover.



Description:

Placed 5/8" X 6' - 0" Long
Aluminum Rod with Cap
Stamped G111 and NGS Style
Access Cover 2 " Deep.

Location:

South side 335th Place 0.2
mile east of Houston Trail.