

Dallas County, Iowa

Horizontal Datum: **NAD 83(NA2011)** - Vertical Datum: **NAVD 1988**
Iowa State Plane South Zone (1402)
Iowa Regional Coordinate System, Zone 8, Ames-Des Moines TM
US Survey Feet
2018

Point Name: **112**

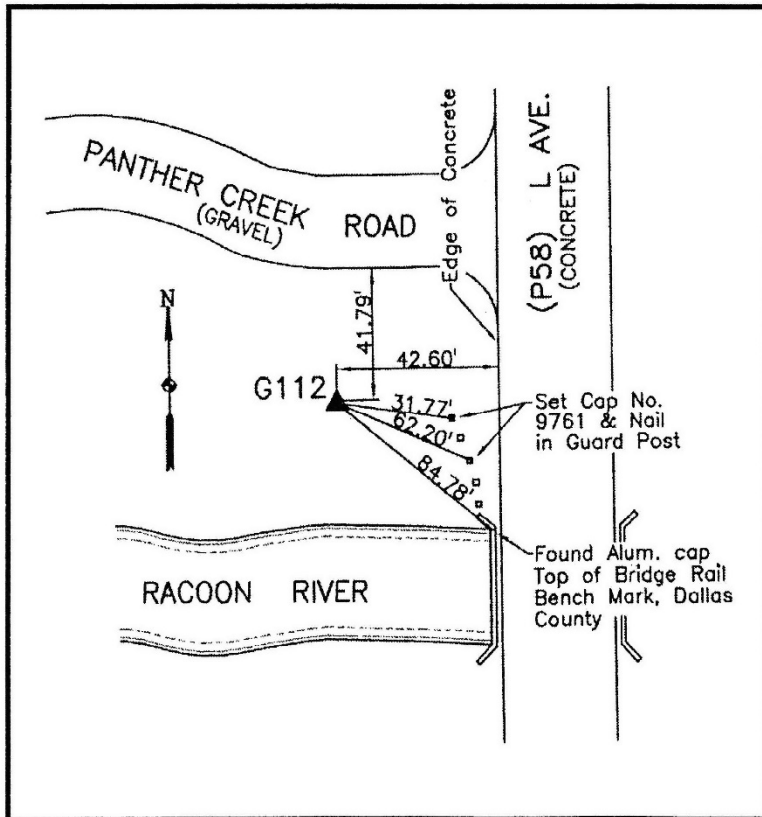
Designation: G112 (set by WHKS in 2001)

NAD 83(NA2011) Latitude: **N41°33'21.13858"** Longitude: **W94°04'25.46592"**
NAVD 88 Ortho Height: **891.922sft** Ellip. Ht: **792.622sft** **Geoid12B**

Iowa South Zone (1402) Northing: **567380.267sft** Easting: **1483389.296sft**
Mapping Angle: **-0°22'41"** Combination Scale Factor: **0.99992971**

IaRCS Zone 8 Northing: **7476003.288sft** Easting: **18402265.067sft**
Mapping Angle: **-0°14'13"** Combination Scale Factor: **1.00000609**

Monument Type: 5/8" dia. x 6'-0" long alum. rod with cap and NGS style access cover.



Description:

Placed 5/8" X 6' - 0" Long
Aluminum Rod with Cap
Stamped G112 and NGS Style
Access Cover 7" Deep.

Location:

Southwest corner of the
intersection of L Avenue (P58)
and Panther Creek Road.