

Dallas County, Iowa

Horizontal Datum: **NAD 83(NA2011)** - Vertical Datum: **NAVD 1988**
Iowa State Plane South Zone (1402)
Iowa Regional Coordinate System, Zone 8, Ames-Des Moines TM
US Survey Feet
2018

Point Name: **113**

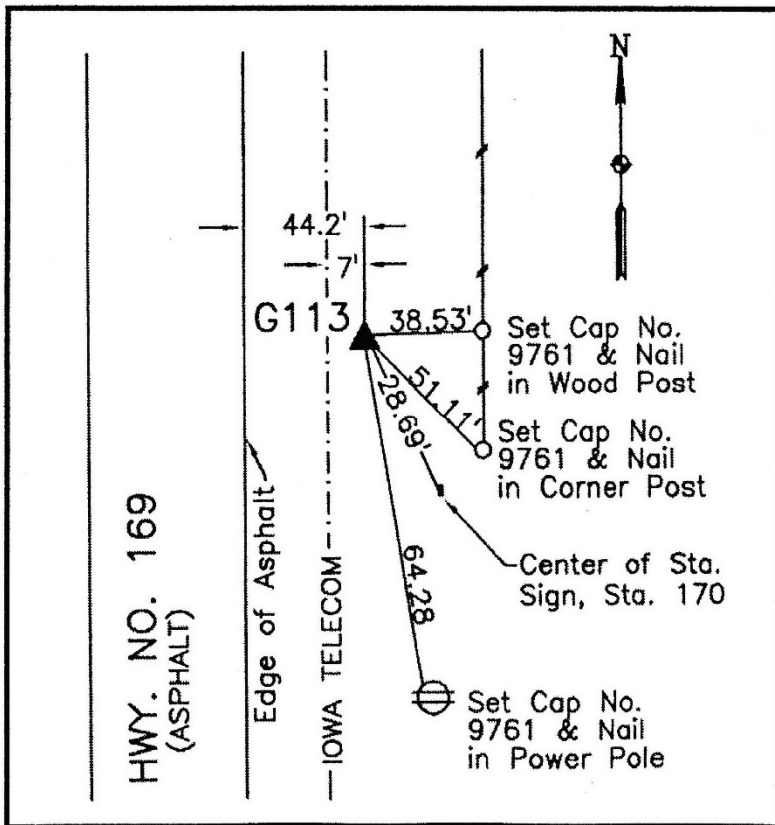
Designation: G113 (set by WHKS in 2001)

NAD 83(NA2011) Latitude: **N41°32'59.53708"** Longitude: **W94°00'44.82324"**
NAVD 88 Ortho Height: **949.991sft** Ellip. Ht: **849.956sft** **Geoid12B**

Iowa South Zone (1402) Northing: **565089.183sft** Easting: **1500150.604sft**
Mapping Angle: **-0°20'15"** Combination Scale Factor: **0.99992633**

IaRCS Zone 8 Northing: **7473753.352sft** Easting: **18419033.227sft**
Mapping Angle: **-0°11'46"** Combination Scale Factor: **0.99999993**

Monument Type: 5/8" dia. x 6'-0" long alum. rod with cap and NGS style access cover.



Description:

Placed 5/8" X 6' - 0" Long
Aluminum Rod with Cap
Stamped G113 and NGS Style
Access Cover 2" Deep.

Location:

East side N Avenue (Hwy 169)
on top of hill between Olive
Lane and Glenwood Circle.
Hwy. 169 Station 170+30.